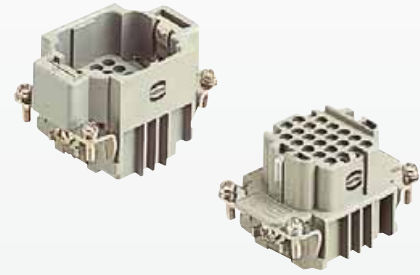


Number of contacts

24+



Inserts

Han
D/DD

Identification	Series	Part No.		Drawing	Dimensions in mm
		Male insert (M)	Female insert (F)		
Crimp terminal Order crimp contacts separately	Han DD®	09 16 024 3001	09 16 024 3101	<p>1) Distance for contact max. 21 mm</p> <p>Contact arrangement View from termination side</p> <p>Panel cut out for inserts for use without hoods/housings</p>	

Identification	Wire gauge (mm²)	Part No.		Drawing	Dimensions in mm																												
		Male contacts	Female contacts																														
Crimp contacts silver plated	0.14-0.37	09 15 000 6104	09 15 000 6204																														
	0.5	09 15 000 6103	09 15 000 6203																														
	0.75	09 15 000 6105	09 15 000 6205																														
	1.0	09 15 000 6102	09 15 000 6202																														
	1.5	09 15 000 6101	09 15 000 6201																														
	2.5	09 15 000 6106	09 15 000 6206																														
gold plated	0.14-0.37	09 15 000 6124	09 15 000 6224	<table border="1"> <thead> <tr> <th>Wire gauge</th> <th></th> <th>∅</th> <th>Stripping length</th> </tr> </thead> <tbody> <tr> <td>0.14-0.37 mm²</td> <td>AWG 26-22</td> <td>0.90 mm</td> <td>8 mm</td> </tr> <tr> <td>0.5 mm²</td> <td>AWG 20</td> <td>1.10 mm</td> <td>8 mm</td> </tr> <tr> <td>0.75 mm²</td> <td>AWG 18</td> <td>1.30 mm</td> <td>8 mm</td> </tr> <tr> <td>1 mm²</td> <td>AWG 18</td> <td>1.45 mm</td> <td>8 mm</td> </tr> <tr> <td>1.5 mm²</td> <td>AWG 16</td> <td>1.75 mm</td> <td>8 mm</td> </tr> <tr> <td>2.5 mm²</td> <td>AWG 14</td> <td>2.25 mm</td> <td>6 mm</td> </tr> </tbody> </table>	Wire gauge		∅	Stripping length	0.14-0.37 mm²	AWG 26-22	0.90 mm	8 mm	0.5 mm²	AWG 20	1.10 mm	8 mm	0.75 mm²	AWG 18	1.30 mm	8 mm	1 mm²	AWG 18	1.45 mm	8 mm	1.5 mm²	AWG 16	1.75 mm	8 mm	2.5 mm²	AWG 14	2.25 mm	6 mm	
	Wire gauge		∅		Stripping length																												
	0.14-0.37 mm²	AWG 26-22	0.90 mm		8 mm																												
	0.5 mm²	AWG 20	1.10 mm		8 mm																												
	0.75 mm²	AWG 18	1.30 mm		8 mm																												
	1 mm²	AWG 18	1.45 mm		8 mm																												
1.5 mm²	AWG 16	1.75 mm	8 mm																														
2.5 mm²	AWG 14	2.25 mm	6 mm																														
0.5	09 15 000 6123	09 15 000 6223																															
0.75	09 15 000 6125	09 15 000 6225																															
1.0	09 15 000 6122	09 15 000 6222																															
1.5	09 15 000 6121	09 15 000 6221																															
2.5	09 15 000 6126	09 15 000 6226																															
FOC contacts for 1 mm plastic fibre		20 10 001 3211	20 10 001 3221																														