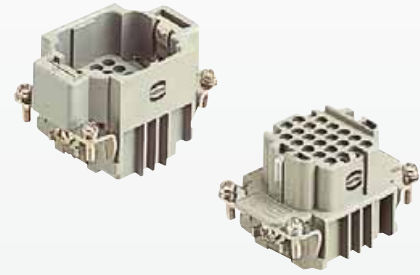


Number of contacts

24+



Inserts

Han  
D/DD

Identification	Series	Part No.		Drawing	Dimensions in mm
		Male insert (M)	Female insert (F)		
<p><b>Crimp terminal</b></p> <p>Order crimp contacts separately</p>	Han DD®	<b>09 16 024 3001</b>	<b>09 16 024 3101</b>	<p>1) Distance for contact max. 21 mm</p> <p>Contact arrangement View from termination side</p> <p>Panel cut out for inserts for use without hoods/housings</p>	

Identification	Wire gauge (mm²)	Part No.		Drawing	Dimensions in mm
		Male contacts	Female contacts		
<p><b>Crimp contacts</b></p> <p>silver plated </p>	<p>0.14-0.37</p> <p>0.5</p> <p>0.75</p> <p>1.0</p> <p>1.5</p> <p>2.5</p>	<p><b>09 15 000 6104</b></p> <p><b>09 15 000 6103</b></p> <p><b>09 15 000 6105</b></p> <p><b>09 15 000 6102</b></p> <p><b>09 15 000 6101</b></p> <p><b>09 15 000 6106</b></p>	<p><b>09 15 000 6204</b></p> <p><b>09 15 000 6203</b></p> <p><b>09 15 000 6205</b></p> <p><b>09 15 000 6202</b></p> <p><b>09 15 000 6201</b></p> <p><b>09 15 000 6206</b></p>		
<p>gold plated </p>	<p>0.14-0.37</p> <p>0.5</p> <p>0.75</p> <p>1.0</p> <p>1.5</p> <p>2.5</p>	<p><b>09 15 000 6124</b></p> <p><b>09 15 000 6123</b></p> <p><b>09 15 000 6125</b></p> <p><b>09 15 000 6122</b></p> <p><b>09 15 000 6121</b></p> <p><b>09 15 000 6126</b></p>	<p><b>09 15 000 6224</b></p> <p><b>09 15 000 6223</b></p> <p><b>09 15 000 6225</b></p> <p><b>09 15 000 6222</b></p> <p><b>09 15 000 6221</b></p> <p><b>09 15 000 6226</b></p>		
<p><b>FOC contacts</b></p> <p>for 1 mm plastic fibre </p>		<b>20 10 001 3211</b>	<b>20 10 001 3221</b>		

Wire gauge	ø	Stripping length
0.14-0.37 mm²	AWG 26-22	0.90 mm
0.5 mm²	AWG 20	1.10 mm
0.75 mm²	AWG 18	1.30 mm
1 mm²	AWG 18	1.45 mm
1.5 mm²	AWG 16	1.75 mm
2.5 mm²	AWG 14	2.25 mm

Stock items in bold type