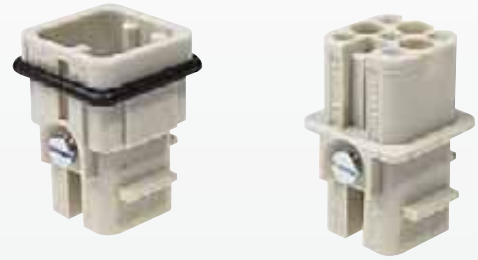


Number of contacts

8



Inserts

Han D/DD

Identification	Series	Part No.		Drawing	Dimensions in mm
		Male insert (M)	Female insert (F)		
<p>Crimp terminal Order Crimp contacts separately</p> <p>For thermoplastic and metal hoods/housings</p>	Han D®	09 36 008 3001	09 36 008 3101	<p>M</p> <p>F</p>	<p>Contact arrangement View from termination side</p>
<p>Coding system with loss of contact</p>		09 33 000 9915	<p>Use of the coding pin prevents incorrect mating to other connectors of the same type.</p> <p>The male pin should be omitted from the opposing cavity in the male insert.</p>		

Identification	Wire gauge (mm²)	Part No.		Drawing	Dimensions in mm
		Male contacts	Female contacts		
<p>Crimp contacts</p> <p>silver plated</p>	0.14-0.37 0.5 0.75 1.0 1.5 2.5	09 15 000 6104 09 15 000 6103 09 15 000 6105 09 15 000 6102 09 15 000 6101 09 15 000 6106	09 15 000 6204 09 15 000 6203 09 15 000 6205 09 15 000 6202 09 15 000 6201 09 15 000 6206		
<p>gold plated</p>	0.14-0.37 0.5 0.75 1.0 1.5 2.5	09 15 000 6124 09 15 000 6123 09 15 000 6125 09 15 000 6122 09 15 000 6121 09 15 000 6126	09 15 000 6224 09 15 000 6223 09 15 000 6225 09 15 000 6222 09 15 000 6221 09 15 000 6226		
<p>FOC contacts for 1 mm plastic fibre</p>		20 10 001 3212	20 10 001 3222		

Wire gauge	ø	Stripping length
0.14-0.37 mm²	AWG 26-22	0.90 mm
0.5 mm²	AWG 20	1.10 mm
0.75 mm²	AWG 18	1.30 mm
1 mm²	AWG 18	1.45 mm
1.5 mm²	AWG 16	1.75 mm
2.5 mm²	AWG 14	2.25 mm

Stock items in bold type