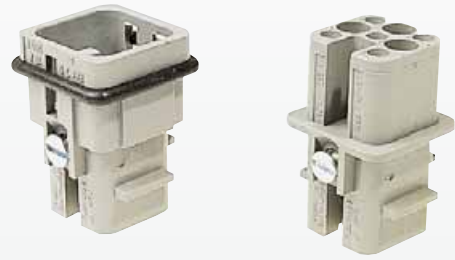


Number of contacts

7 +



Inserts

Han D/DD

Identification	Series	Part No.		Drawing	Dimensions in mm
		Male insert (M)	Female insert (F)		
Crimp terminal Order crimp contacts separately	Han D®	09 21 007 3031¹⁾	09 21 007 3131¹⁾		Contact arrangement View from termination side
1) Attention Only for thermoplastic hoods/housings					
Coding system with loss of contact 		09 33 000 9915			To avoid accidental incorrect mating of adjacent connectors a coding system is required. Coding is effected by means of a code pin to be inserted into the selected chamber of the female insert. The opposite male contact should be omitted.

Identification	Wire gauge (mm²)	Part No.		Drawing	Dimensions in mm
		Male contacts	Female contacts		
Crimp contacts silver plated	0.14-0.37 0.5 0.75 1.0 1.5 2.5	09 15 000 6104 09 15 000 6103 09 15 000 6105 09 15 000 6102 09 15 000 6101 09 15 000 6106	09 15 000 6204 09 15 000 6203 09 15 000 6205 09 15 000 6202 09 15 000 6201 09 15 000 6206		
gold plated	0.14-0.37 0.5 0.75 1.0 1.5 2.5	09 15 000 6124 09 15 000 6123 09 15 000 6125 09 15 000 6122 09 15 000 6121 09 15 000 6126	09 15 000 6224 09 15 000 6223 09 15 000 6225 09 15 000 6222 09 15 000 6221 09 15 000 6226		
FOC contacts for 1 mm plastic fibre		20 10 001 3212	20 10 001 3222		

Wire gauge	ø	Stripping length
0.14-0.37 mm²	AWG 26-22	0.90 mm
0.5 mm²	AWG 20	1.10 mm
0.75 mm²	AWG 18	1.30 mm
1 mm²	AWG 18	1.45 mm
1.5 mm²	AWG 16	1.75 mm
2.5 mm²	AWG 14	2.25 mm

Stock items in bold type