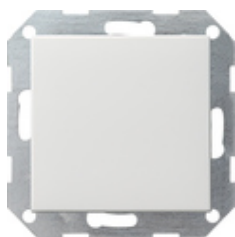











Interrupteur-poussoir 10 AX 250 V~ avec bascule Interrupteur va-et-vient universel



Spécification	Réf.	UV.	EUR/pièce HTVA	SP	EAN
 blanc crème brillant	0126 01	1/5	13,48	01	4010337126010
 blanc brillant	0126 03	1/5	13,48	01	4010337126034
 blanc satiné	0126 27	1/5	13,48	01	4010337126270
 anthracite	0126 28	1/5	13,86	11	4010337126287
 teinte alu	0126 26	1/5	16,29	11	4010337126263
 noir mat	0126 005	1/5	16,29	11	4010337037965
 gris mat	0126 015	1/5	16,29	11	4010337077145
 acier inoxydable	0126 600	1/5	21,63	11	4010337021742
 bronze	0126 603	1/5	21,41	11	4010337106043



laiton

0126 604

1/5

21,41

11

4010337106050



chrome

0126 605

1/5

21,41

11

4010337000846

Caractéristiques techniques

Profondeur d'encastrement: 28 mm

section de raccordement
- Pour les conducteurs jusqu'à: 2,5 mm²

- LEDi/ CFLi: 100 W