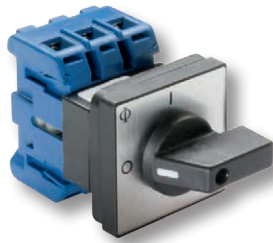


According to IEC 60947-3, EN 60947-3, VDE 0660 part 107



Rated Thermal Current $I_U/I_{th}/I_{the}$		A	25	
Rated Insulation Voltage U_i ¹		V	690	
Rated Impulse Withstand Voltage U_{imp}		kV	4	
Rated Operational Current I_e				
AC-21A	Switching of resistive loads, including moderate overloads	A	25	
AC-22A	Switching of combined resistive or low inductive loads including moderate overloads	220 V–500 V	A 20	
		660 V–690 V	A 20	
Rated Utilization Category				
AC-3	Direct-on-line starting	3 phase, 3 pole	220 V–240 V	kW 4
			380 V–440 V	5,5
			500 V	5,5
			660 V–690 V	5,5
AC-23A	Frequent switching of motors or other high inductive loads	3 phase, 3 pole	220 V–240 V	kW 5,5
			380 V–440 V	7,5
			500 V	7,5
			660 V–690 V	7,5
Short Circuit Protection				
Max. fuse size	gG-characteristic	A	35	
Rated short-time withstand current	(1 s-current)	A	350	
For connections with insulated ring and fork type cable terminal - copper wires only				
	Single-core or stranded wire	mm ²	6	
	Flexible wire	mm ²	4	
	Flexible wire with sleeving in accordance with DIN 46228	mm ²	4	

¹ Valid for lines with grounded common neutral termination, overvoltage category III, Other values on request.

Miscellaneous

Minimum Voltage:	on request	
Power loss per contact at I_U :	0,7 W	
Resistance to vibration:	min. 4 g, 2-100 Hz, 1,6 mm	
Resistance to shock:	min. 5 g, 6 ms	
Ambient Temperature of Stages :	open at 100 % I_U/I_{th}	50 °C during 24 hours with peaks up to 55 °C
	enclosed at 100 % I_{the}	35 °C during 24 hours with peaks up to 40 °C
Storage temperature:	-40 °C to 85 °C (in case of temperature below -5 °C no shock load permissible)	

Approvals and Standards

IEC 60947
EN 60947



USA / Canada



Rated Thermal Current $I_U/I_{th}/I_{the}$				A	25
Rated Insulation Voltage U_i				V	600
Rated Operational Current I_e					
Pilot Duty:			Heavy	VAC	A600
Ampere Rating	Resistive or low inductive loads	ON/OFF 1-0-2	600 V	A	25
			600 V		25
Max. Permissible Wire Gage - copper wires only					
Single-core or stranded wire				AWG	10
Flexible wire: AWG wire (without sleeving)				AWG	10
Ratings					
Standard motor load, DOL-Rating (similar AC-3)	3 phase 3 pole	110 V - 120 V	HP	1,5	
		220 V - 240 V		3	
		440 V - 480 V		5	
		550 V - 600 V		5	

Miscellaneous

Minimum Voltage:	on request	
Power loss per contact at I_U :	0,7 W	
Resistance to vibration:	min. 4 g, 2-100 Hz, 1,6 mm	
Resistance to shock:	min. 5 g, 6 ms	
Ambient Temperature of Stages :	open at 100 % I_U/I_{th}	50 °C during 24 hours with peaks up to 55 °C
	enclosed at 100 % I_{the}	35 °C during 24 hours with peaks up to 40 °C
Storage temperature:	-40 °C to 85 °C (in case of temperature below -5 °C no shock load permissible)	

Approvals and Standards

IEC 60947
EN 60947

