

European Mounting Hardware for LANmark

LANmark EU style 45 x 45 module 2 Snap-In flat white

Aginode Ref.: N423.550

- Takes up to 2 Snap-In connectors
- Colour white (RAL 9010)
- Also available in ivory (RAL 9002)

DESCRIPTION

Application

This range of modular outlets can accommodate 2 Snap-In connectors.

For the specific information on the Snap-In connectors, refer to the corresponding datasheets.

Guarantees

- All plastic material is UL 94V0
- Compliant with:

- ISO/IEC11801
- EN 50173
- ANSI/TIA/EIA 568-A

Installation

These modular outlets fit into a complete range of international 45x45 covering plates and surface mount boxes.

For easy management and identification, the outlet is prepared for an integrated outlet labelling system.

Are integrated :

- Transparent labelling windows
- Shutters

The Snap-In connectors are inserted into the modular outlet by a simple click-in mechanism.

- UL listed
- For copper Snap-in connectors.

CHARACTERISTICS

Construction characteristics

Colour

White RAL 9010

Dimensional characteristics

Depth

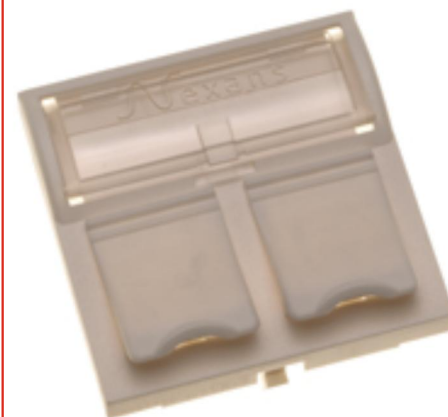
- mm

Height

45 mm

All drawings, designs, specifications, plans and particulars of weights, size and dimensions contained in the technical or commercial documentation of Aginode is indicative only and shall not be binding on Aginode or be treated as constituting a representation on the part of Aginode.

Generated 15/03/2024 www.aginode.net Page 1 / 2



You may see a combination of brands on documents or products during the transition.

STANDARDS

International
Manufacturer specification

European Mounting Hardware for LANmark

LANmark EU style 45 x 45 module 2 Snap-In flat white

Dimensional characteristics

Width

45 mm

All drawings, designs, specifications, plans and particulars of weights, size and dimensions contained in the technical or commercial documentation of Aginode is indicative only and shall not be binding on Aginode or be treated as constituting a representation on the part of Aginode.

Generated 15/03/2024 www.aginode.net Page 2 / 2