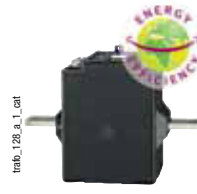


Primary wound moulded case CT

References



Primary	Secondary ⁽¹⁾	TRB 60		TRB 70		T2RB 115		TRB 135	
		Class 0.5	Reference	Class 0.5	Reference	Class 0.2s	Reference	Class 0.5	Reference
5 A	5 A	2.5 VA	192T 0505	10 VA	192T 0521				
10 A	5 A	2.5 VA	192T 0510	10 VA	192T 0522				
15 A	5 A	2.5 VA	192T 0515	10 VA	192T 0523				
20 A	5 A	2.5 VA	192T 0520	10 VA	192T 0524				
25 A	5 A			10 VA	192T 0525	7.5 VA	192U 0402	10 VA	192T 0603
30 A	5 A			5 VA	192T 0530	7.5 VA	192U 0403	10 VA	192T 0607
40 A	5 A			2.5 VA	192T 0540	7.5 VA	192U 0404	10 VA	192T 0604
50 A	5 A					7.5 VA	192U 0405	10 VA	192T 0605
60 A	5 A					7.5 VA	192U 0406	10 VA	192T 0606
75 A	5 A					7.5 VA	192U 0407	10 VA	192T 0608
80 A	5 A					7.5 VA	192U 0408	10 VA	192T 0609
100 A	5 A							10 VA	192T 0610
125 A	5 A					7.5 VA	192U 0412	10 VA	192T 0612
150 A	5 A					7.5 VA	192U 0415	10 VA	192T 0615

(1) Secondary 1 A: on request.

Accessories

Description of accessories	TRB 60 Reference	TRB 70 Reference	TRB 135 Reference
DIN rail mounting	192T 0003	192T 0005	
Sealable cover	192T 0105	192T 0103	192T 0101

CT Plug-in transducer (CEA-VA)		TRB 60 Reference	TRB 70 Reference
Power supply	Output		
Self supplied	0-20 mA / 0-10 VDC	192Y 0015	192Y 0025
230 VAC	0-20 mA / 0-10 VDC	192Y 0215	192Y 0225
24 VDC	0-20 mA / 0-10 VDC	192Y 0115	192Y 0125

CT Plug-in transducer (CEA-VA4)		TRB 60 Reference	TRB 70 Reference
Power supply	Output		
230 VAC	4-20 mA / 0-10 VDC	192T 0255	192T 0265
24 VDC	4-20 mA / 0-10 VDC	192Y 0155	192Y 0165



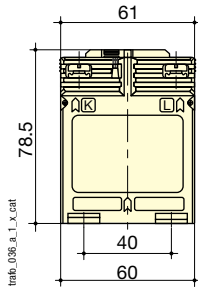
Certificate of performance

Each class 0.2s current transformer is supplied with an individual certificate of performance, attesting to its accuracy.

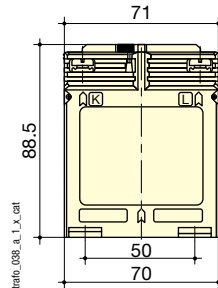
Primary wound moulded case CT

➔ Dimensions

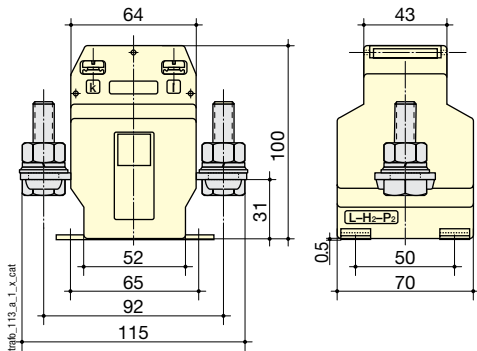
TRB 60



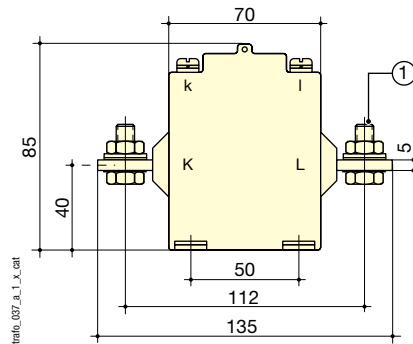
TRB 70



T2RB115



TRB 135



1. 25 to 100 A: M8 x 25

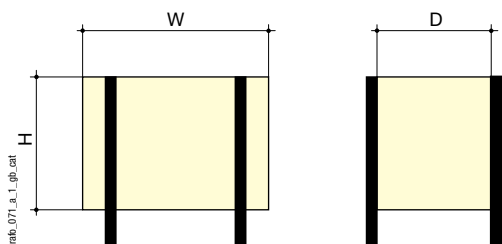
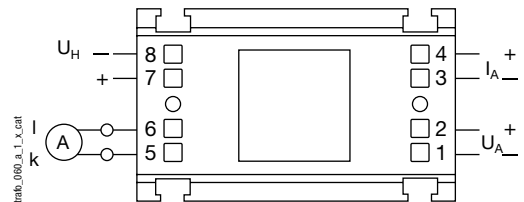
Coiled primary CT	TRB 60	TRB 70	T2RB 115	TRB 135
H x W x D (mm)	78.5 x 61 x 35	88.5 x 71 x 45	115 x 100 x 70	85 x 135 X 60
DIN rail mounting.	yes	yes	no	no

➔ Associated transducers



Transducer to be associated with adapted current transformers:

- Class 0.5.
- Input: 1 or 5 A.
- Output:
 - 0-20 mA, 0-10 V (type CEA-VA)
 - 4-20 mA, 0-10 V (type CEA-VA4)
- Self-supplied or auxiliary power supply 24 VDC or 230 VAC.
- 3 sizes according to the CT: type 1, 2 or 3.



Dimensions (mm)

Converter	For CT	Height (mm)	Width (mm)	Depth (mm)
Type 1	TRB 60	50.5	60	32.5
Type 2	TRB 70	50	70	43

Cable-through CT

References



Primary	Secondary ⁽¹⁾	TCA 21		Reference	TCA 22		Reference	T2CA 225		Reference
		Class 1	Class 0.5		Class 1	Reference		Class 0.2s	Reference	
50 A	5 A	1 VA		192T 2005						
60 A	5 A	1.25 VA		192T 2006						
75 A	5 A	1.5 VA		192T 2007						
80 A	5 A	1.5 VA		192T 2008						
100 A	5 A		1.5 VA	192T 2010	1 VA	192T 2022				
125 A	5 A		1.5 VA	192T 2012	1 VA	192T 2026				
150 A	5 A		1.5 VA	192T 2015	1.5 VA	192T 2023	1.5 VA	192U 2215		
160 A	5 A	2.5 VA		192T 2060						
200 A	5 A		2.5 VA	192T 2020	2.5 VA	192T 2024	2.5 VA	192U 2220		
250 A	5 A		2.5 VA	192T 2016	5 VA	192T 2025	5 VA	192U 2225		
300 A	5 A		5 VA	192T 2017	5 VA	192T 2030	5 VA	192U 2230		
400 A	5 A				10 VA	192T 2034	7.5 VA	192U 2240		
500 A	5 A				10 VA	192T 2035	7.5 VA	192U 2250		
600 A	5 A				10 VA	192T 2036	7.5 VA	192U 2260		

(1) Secondary 1 A: on request.

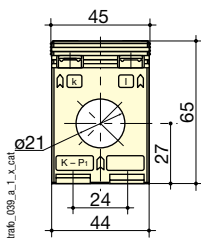
Accessories

Description of accessories	TCA 21 Reference	TCA 22 Reference	T2CA 225 Reference
DIN rail mounting	192T 0006	192T 0007	192T 0003
Copper guide tube Ø 8.5 mm ⁽¹⁾	192T 0020		
Copper guide tube Ø 12.5 mm ⁽¹⁾	192T 0021	192T 0023	
Copper guide tube Ø 16.5 mm ⁽¹⁾		192T 0024	
Sealable cover			192T 0105

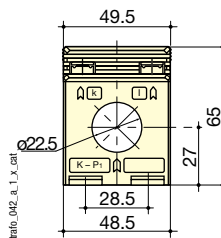
(1) For centralising small cables within the CT aperture.

Dimensions

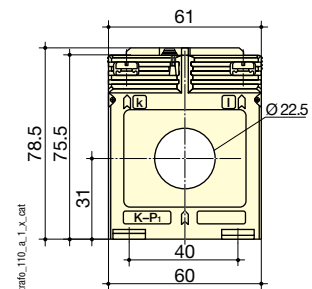
TCA 21



TCA 22



T2CA 225



Cable-through CT	TCA 21	TCA 22	T2CA 225
Ø cable (mm)	21	22.5	22.5
H x W x D (mm)	65 x 45 x 30	65 x 49.5 x 35	78.5 x 61 x 35
DIN rail mounting	yes	yes	yes

Transformateur de courant (ASR 21.3) (ASR 21.3) tca 21 200/5a