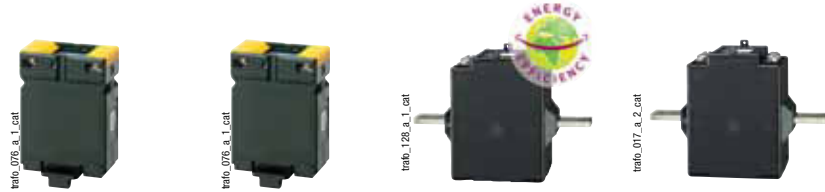


Primary wound moulded case CT

References



Primary	Secondary ⁽¹⁾	TRB 60		TRB 70		T2RB 115		TRB 135	
		Class 0.5	Reference	Class 0.5	Reference	Class 0.2s	Reference	Class 0.5	Reference
5 A	5 A	2.5 VA	192T 0505	10 VA	192T 0521				
10 A	5 A	2.5 VA	192T 0510	10 VA	192T 0522				
15 A	5 A	2.5 VA	192T 0515	10 VA	192T 0523				
20 A	5 A	2.5 VA	192T 0520	10 VA	192T 0524				
25 A	5 A			10 VA	192T 0525	7.5 VA	192U 0402	10 VA	192T 0603
30 A	5 A			5 VA	192T 0530	7.5 VA	192U 0403	10 VA	192T 0607
40 A	5 A			2.5 VA	192T 0540	7.5 VA	192U 0404	10 VA	192T 0604
50 A	5 A					7.5 VA	192U 0405	10 VA	192T 0605
60 A	5 A					7.5 VA	192U 0406	10 VA	192T 0606
75 A	5 A					7.5 VA	192U 0407	10 VA	192T 0608
80 A	5 A					7.5 VA	192U 0408	10 VA	192T 0609
100 A	5 A							10 VA	192T 0610
125 A	5 A					7.5 VA	192U 0412	10 VA	192T 0612
150 A	5 A					7.5 VA	192U 0415	10 VA	192T 0615

(1) Secondary 1 A: on request.

Accessories

Description of accessories	TRB 60 Reference	TRB 70 Reference	TRB 135 Reference
DIN rail mounting	192T 0003	192T 0005	
Sealable cover	192T 0105	192T 0103	192T 0101

CT Plug-in transducer (CEA-VA)		TRB 60 Reference	TRB 70 Reference
Power supply	Output		
Self supplied	0-20 mA / 0-10 VDC	192Y 0015	192Y 0025
230 VAC	0-20 mA / 0-10 VDC	192Y 0215	192Y 0225
24 VDC	0-20 mA / 0-10 VDC	192Y 0115	192Y 0125

CT Plug-in transducer (CEA-VA4)		TRB 60 Reference	TRB 70 Reference
Power supply	Output		
230 VAC	4-20 mA / 0-10 VDC	192T 0255	192T 0265
24 VDC	4-20 mA / 0-10 VDC	192Y 0155	192Y 0165



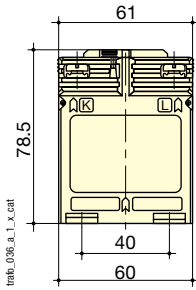
Certificate of performance

Each class 0.2s current transformer is supplied with an individual certificate of performance, attesting to its accuracy.

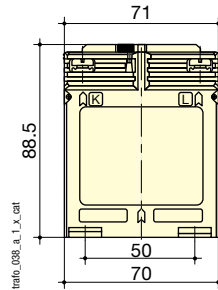
Primary wound moulded case CT

Dimensions

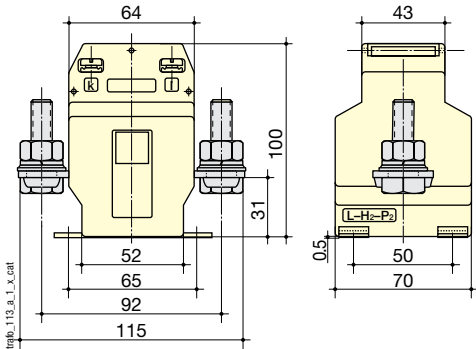
TRB 60



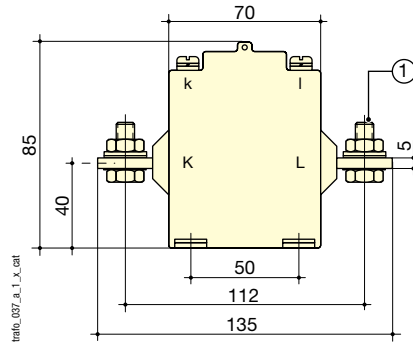
TRB 70



T2RB115



TRB 135



1. 25 to 100 A: M8 x 25

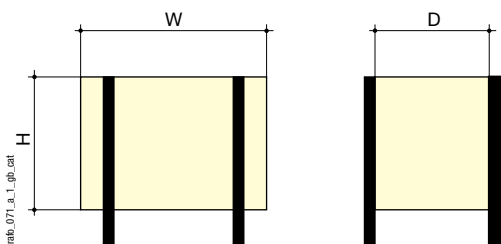
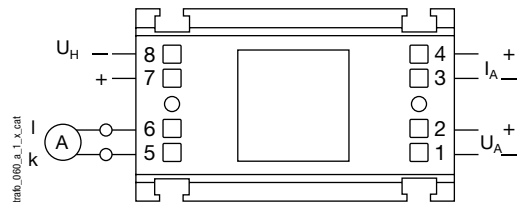
Coiled primary CT	TRB 60	TRB 70	T2RB 115	TRB 135
H x W x D (mm)	78.5 x 61 x 35	88.5 x 71 x 45	115 x 100 x 70	85 x 135 X 60
DIN rail mounting.	yes	yes	no	no

Associated transducers



Transducer to be associated with adapted current transformers:

- Class 0.5.
- Input: 1 or 5 A.
- Output:
 - 0-20 mA, 0-10 V (type CEA-VA)
 - 4-20 mA, 0-10 V (type CEA-VA4)
- Self-supplied or auxiliary power supply 24 VDC or 230 VAC.
- 3 sizes according to the CT: type 1, 2 or 3.



Dimensions (mm)

Converter	For CT	Height (mm)	Width (mm)	Depth (mm)
Type 1	TRB 60	50.5	60	32.5
Type 2	TRB 70	50	70	43

Cable-through CT

References



Primary	Secondary ⁽¹⁾	TCA 21		Reference	TCA 22		Reference	T2CA 225		Reference
		Class 1	Class 0.5		Class 1	Class 0.2s				
50 A	5 A	1 VA		192T 2005						
60 A	5 A	1.25 VA		192T 2006						
75 A	5 A	1.5 VA		192T 2007						
80 A	5 A	1.5 VA		192T 2008						
100 A	5 A		1.5 VA	192T 2010	1 VA	192T 2022				
125 A	5 A		1.5 VA	192T 2012	1 VA	192T 2026				
150 A	5 A		1.5 VA	192T 2015	1.5 VA	192T 2023	1.5 VA	192U 2215		
160 A	5 A	2.5 VA		192T 2060						
200 A	5 A		2.5 VA	192T 2020	2.5 VA	192T 2024	2.5 VA	192U 2220		
250 A	5 A		2.5 VA	192T 2016	5 VA	192T 2025	5 VA	192U 2225		
300 A	5 A		5 VA	192T 2017	5 VA	192T 2030	5 VA	192U 2230		
400 A	5 A				10 VA	192T 2034	7.5 VA	192U 2240		
500 A	5 A				10 VA	192T 2035	7.5 VA	192U 2250		
600 A	5 A				10 VA	192T 2036	7.5 VA	192U 2260		

(1) Secondary 1 A: on request.

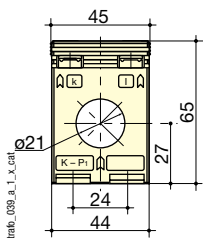
Accessories

Description of accessories	TCA 21 Reference	TCA 22 Reference	T2CA 225 Reference
DIN rail mounting	192T 0006	192T 0007	192T 0003
Copper guide tube Ø 8.5 mm ⁽¹⁾	192T 0020		
Copper guide tube Ø 12.5 mm ⁽¹⁾	192T 0021	192T 0023	
Copper guide tube Ø 16.5 mm ⁽¹⁾		192T 0024	
Sealable cover			192T 0105

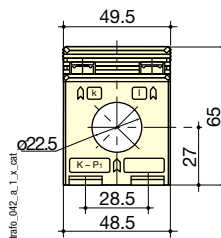
(1) For centralising small cables within the CT aperture.

Dimensions

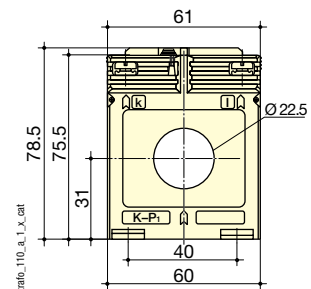
TCA 21



TCA 22



T2CA 225



Cable-through CT	TCA 21	TCA 22	T2CA 225
Ø cable (mm)	21	22.5	22.5
H x W x D (mm)	65 x 45 x 30	65 x 49.5 x 35	78.5 x 61 x 35
DIN rail mounting	yes	yes	yes

Transformateur de courant (ASR 20.3) (ASR 20.3) tca 21 250/5a