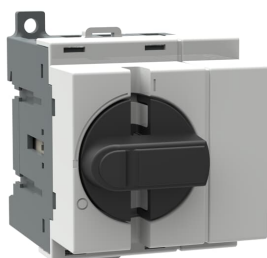


---

PRODUCT-DETAILS

# OT40M4

## OT40M4 SWITCH-DISCONNECTOR




---

### Informations générales

Extension du type de produit	OT40M4
Code de produit	1SCA022497R0570
EAN	6417019158419
Description courte	OT40M4 SWITCH-DISCONNECTOR
Description longue	4-pole, front operated, base mounted, DIN-rail mountable switch-diconnector with protected clamp terminals, handle and shaft are not included, suitable for distribution board with 45mm slots

---

### Commande

Quantité minimum	1 pièce
Code douanier	85365080
Pays d'origine	Finland (FI)

---

### Popular Downloads

Fiche produit, informations techniques	1SCC301020C0201
Instructions et manuels	1SCC301052M0006
Mechanical Drawings	OT16M4.stp

---

### Dimensions

---

Produit Largeur Net	68 mm
Produit Hauteur Net	48 mm
Produit Longueur Net	73 mm
Poids net	0.125 kg

## Technique

Rated Operational Current AC-21A ( $I_e$ )	(380 ... 415 V) 40 A
Rated Operational Current AC-22A ( $I_e$ )	(380 ... 415 V) 40 A (500 V) 40 A (690 V) 40 A
Rated Operational Current AC-23A ( $I_e$ )	(380 ... 415 V) 23 A (500 V) 23 A (690 V) 12 A
Rated Operational Power AC-23A ( $P_e$ )	(220 ... 240 V) 5.5 kW (400 ... 415 V) 11 kW (500 V) 11 kW (690 V) 11 kW
Courant thermique conventionnel à l'air libre ( $I_{th}$ )	q = 40 °C 40 A
Conventional Thermal Current ( $I_{the}$ )	Fully Enclosed 40 A
Tension assignée de tenue aux chocs ( $U_{imp}$ )	8 kV
Tension assignée d'isolement ( $U_i$ )	acc. to IEC/EN 60664-1 750 V
Tension	Circuit principal 750 V
Rated Short-Circuit Making Capacity ( $I_{cm}$ )	(690 V) 0.71 kA
Courant assigné de courte durée admissible ( $I_{cw}$ )	for 1 s 0.5 kA
Rated Conditional Short- Circuit Current ( $I_{nc}$ )	(40 A fuse, ≤415V) 50 kA (25 A fuse, 690 V) 50 kA
Power Loss	at Rated Operating Conditions per Pole 1.6 W
Degré de pollution	3
Handle Type	Handle and shaft not included
Fourth Pole Position	Right Side
Fourth Pole Type	Switched - Simultaneous Function
Switches Operating Mechanism	Mechanism on Top of the Switch
Distance Between Phases	Standard
Position of Line Terminals	Top In - Bottom Out Bottom In - Top Out
Mode de fonctionnement	Front operated
Normes et standards	IEC 60947-3 / UL 508 / CSA C22.2 No. 14
Fonctions spéciales	No
Type de montage	Base mounting
Nombre de pôles	4
Section de câble	Cu 0.75 ... 10 mm <sup>2</sup>
Indice de protection	Front IP20
Type de borne	Screw Terminals
Couple de serrage	acc. IEC 60947-1 0.8 N·m
Durabilité mécanique	20000
Lock Type	No

---

## Technique UL/CSA

---

Puissance nominale UL/CSA	(110 ... 120 V AC) Single Phase 2 Hp (240 V AC) Single Phase 5 Hp (440 ... 480 V AC) Single Phase 10 Hp (550 ... 600 V AC) Single Phase 15 Hp (220 ... 240 V AC) Three Phase 10 Hp (440 ... 480 V AC) Three Phase 20 Hp (550 ... 600 V AC) Three Phase 25 Hp
Couple de serrage	acc. IEC 60947-1 0.8 N·m

---



---

## Environnement

---

Statut RoHS	Following EU Directive 2011/65/EU
Informations environnementales	1SCC301262D0201

---



---

## Certificats et Déclarations (Numéro de document)

---

Déclaration de Conformité - CE	1SCC301166D2703
Informations environnementales	1SCC301262D0201
Instructions et manuels	1SCC301052M0006
Informations RoHS	1SCC301166D2703

---



---

## Emballage

---

Emballage Niveau 1 Unités	box 1 pièce
Emballage Niveau 1 Largeur	86 mm
Emballage Niveau 1 Longueur	103 mm
Emballage Niveau 1 Hauteur	82 mm
Emballage Niveau 1 Poids	0.14 kg
Emballage Niveau 1 EAN	6417019158419

---



---

## Classifications

---

Code de classification d'objet	Q
ETIM 5	EC000216 - Switch disconnecter
ETIM 6	EC000216 - sectionneur de charge
ETIM 7	EC000216 - Switch disconnecter
ETIM 8	EC000216 - Switch disconnecter
eClass	V11.1 : 27371403
Catégorie DEEE	5. Small Equipment (No External Dimension More Than 50 cm)
E-Number (Finland)	3601202
E-Number (Sweden)	2102722

---

---

## Catégories

---

Produits basse tension → Interrupteurs → Interrupteurs-sectionneurs

