

# LANmark-6 Snap-In Connector

## LANmark-6 Evo Snap-In Connector Category 6 Screened

**Aginode Ref.:** N420.666

- Category 6 Snap-In connector
- 360° screened, compatible with foil shielded and braid shielded cables
- Fast and easy termination without punch down tool
- Wiring according to colour code T568B or T568A
- Accepts solid wire from 24 to 22 AWG
- Reterminable
- Supports POE Plus applications (Type 1 and Type 2)
- An adapter can be added to fit the keystone format

## DESCRIPTION

### Application

Aginode LANmark-6 Evo Snap-In connectors are manufactured and tested to the latest Category 6 specifications defined in the International and American cabling standards and are designed to meet or exceed the quality and performance criteria needed to support all applications up to 250 MHz.

- 10 BASE-T Ethernet
- 100 BASE-T Fast Ethernet
- 1000 BASE-T Gigabit Ethernet
- 155 Mb ATM
- 622 Mb ATM
- 1.2 Gb ATM
- POE Plus (including IEC 60512-9-3 and IEC 60512-99-001)
- Future Class E applications

### Design

Aginode LANmark-6 Evo Snap-In connectors are designed to match with LANmark-6 cable and patch cords and to complement all LANmark modular components, such as:

- Snap-In patch panels (fixed, sliding and angled) and Zone Distribution Boxes
- Snap-In outlet modules (UK, US, European and German style)

### Performance

Aginode LANmark-6 Evo Snap-In connectors meet or exceed the requirements for Category 6 connecting hardware as described in ISO/IEC 11801, IEC 60603-7 and EIA/TIA 568-C.2.

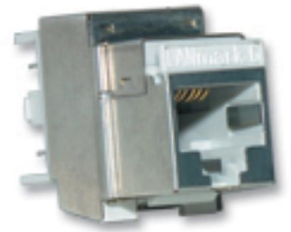
### Installation



Maximum operating temperature  
60 °C



Minimum operating temperature  
-20 °C



You may see a combination of brands on documents or products during the transition.

## STANDARDS

**International** IEC 60603-7-5;  
IEEE 802.3af (PoE);  
IEEE 802.3at (PoE+)

All drawings, designs, specifications, plans and particulars of weights, size and dimensions contained in the technical or commercial documentation of Aginode is indicative only and shall not be binding on Aginode or be treated as constituting a representation on the part of Aginode.

Generated 15/03/2024 [www.aginode.net](http://www.aginode.net) Page 1 / 4

# LANmark-6 Snap-In Connector

## LANmark-6 Evo Snap-In Connector Category 6 Screened

The wire organiser guarantees fast and easy termination of the LANmark-6 Evo Snap-In connector without the need for a punchdown tool. An optional comfort tool (N420.567) can be used to increase the ease of installation.

A stranded version is available for CP to TO links.

### Guarantees

The LANmark-6 Evo Snap-In performance is guaranteed to meet or exceed the requirements of the above mentioned standards.

Traceability codes on both connector and packaging ensure quality validation.

Installations with LANmark-6 cable and connectivity are qualified for a 25 year full system warranty, which includes Parts, Installation, Channel Performance and Application Support, as described in the Aginode Certified System Warranty.



Maximum operating temperature  
60 °C



Minimum operating temperature  
-20 °C

All drawings, designs, specifications, plans and particulars of weights, size and dimensions contained in the technical or commercial documentation of Aginode is indicative only and shall not be binding on Aginode or be treated as constituting a representation on the part of Aginode.

Generated 15/03/2024 [www.aginode.net](http://www.aginode.net) Page 2 / 4

# LANmark-6 Snap-In Connector

LANmark-6 Evo Snap-In Connector Category 6 Screened

## CHARACTERISTICS

### Construction characteristics

Colour	Light grey
Screen	Yes

### Dimensional characteristics

Height	23.2 mm
Width	16.8 mm
Depth	36 mm

### Usage characteristics

Category	Cat. 6
Range	LANmark-6
Component function	Connector
Field of application	Indoor
Maximum operating temperature	60 °C
Minimum operating temperature	-20 °C

## ELECTRICAL PERFORMANCE

Frequency MHz	Attenuation	NEXT pp	PSNEXT	FEXT pp	PSFEXT	RL
1	0,1	94,0	90,0	83,1	80,1	30,0
4	0,1	82,0	78,0	71,1	68,1	30,0
10	0,1	74,0	70,0	63,1	60,1	30,0
16	0,1	69,9	65,9	59,0	56,0	30,0
20	0,1	68,0	64,0	57,1	54,1	30,0
31,25	0,1	64,1	60,1	53,2	50,2	30,0
62,5	0,2	58,1	54,1	47,2	44,2	28,1
100	0,2	54,0	50,0	43,1	40,1	24,0
125	0,2	52,1	48,1	41,2	38,2	22,1
155	0,2	50,2	46,2	39,3	36,3	20,2
175	0,3	49,1	45,1	38,2	35,2	19,1
200	0,3	48,0	44,0	37,1	34,1	18,0
250	0,3	46,0	42,0	35,1	32,1	16,0

All drawings, designs, specifications, plans and particulars of weights, size and dimensions contained in the technical or commercial documentation of Aginode is indicative only and shall not be binding on Aginode or be treated as constituting a representation on the part of Aginode.

Generated 15/03/2024 [www.aginode.net](http://www.aginode.net) Page 3 / 4

# LANmark-6 Snap-In Connector

LANmark-6 Evo Snap-In Connector Category 6 Screened

## MECHANICAL AND ELECTRICAL CHARACTERISTICS

Contact resistance:	max. 20 m Ohm
Input to output DC resistance:	max. 200 m Ohm
Insulation resistance:	min. 500 M Ohm
Voltage proof:	1000 V DC or AC peak, contact to contact.
Mating cycles:	min. 750
Insertion cycles:	min. 20