

Hardware voor de montage van stopcontacten

LANmark EU style angled 45 x 45 module 2 Snap-In ivory

Contactpersoon
Cabling Solutions
Telefoon: +32 2 363 38 00
info.ncs@nexans.com

Nexans ref.: [N423.541N](#)

- Kit of 45x45 back module with Snap-In front module
- Accommodates 2 Snap-In connectors
- Suitable for both copper and fibre
- Installation benefit thanks to angled design
- Colour ivory (RAL 9002)
- Also available in white (RAL 9010)

BESCHRIJVING

Application

- The European style 45x45 angled module can accommodate 2 LANmark Snap-In connectors.
- It is also designed to hold fibre Snap-In adaptors, LC or SC, duplex or simplex.
- For detailed information on Nexans Snap-In connectors, please refer to the corresponding datasheets.

Guarantees

- The plastic material is UL 94V0

Installation

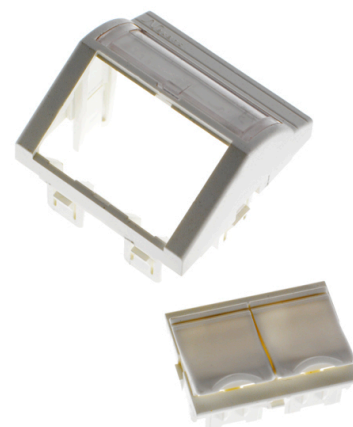
- The Snap-In connectors easily clip in the shuttered front module, which then is mounted into the 45x45 module without the need for any tools.
- Thanks to the angled position of the connectors, the minimum bend radius of the cables is maintained, even in situations where depth is restricted.
- The inclined faceplate also protects the patch cords and prevents dust entry when the shutters are left open.
- The 45x45 angled module fits into a wide range of international frames, surface mount boxes and trunking.

Features:

- Labelling window for easy management and port identification.
- Compatible with all Nexans Snap-In format connectors and adaptors
- Compatible with all Nexans 45x45 structural hardware
- Allows vertical and horizontal mounting in cable ducts
- Side clips can be easily removed if necessary
- Shuttered front module can be inserted in 2 different positions

Included in the kit:

- Labelling window
- Shutters



LANmark

NORMEN

Internationaal
Manufacturer specification

Optional:

- Coloured shutters (bag of 100):
 - red - ref. N421.701RED
 - blue - ref. N421.701BLU
 - green - ref. N421.701GRE
 - yellow - ref. N421.701YEL
 - orange - ref. N421.701ORA
 - dark grey - ref. N421.701DGR
 - black - ref. N421.701BLA

KARAKTERISTIEKEN

Constructiekenmerken

Kleur ivory

Maatvoeringskenmerken

Diepte 36 mm

Breedte 45 mm

Hoogte (mm) 45 mm