

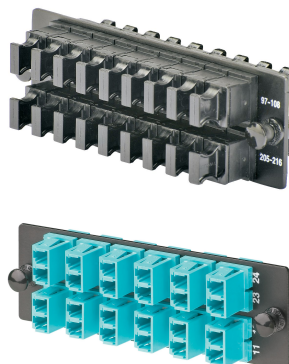
Opticom® Fiber Adapter Panels (FAPs)

PANDUIT®

SPECIFICATION SHEET

specifications

Fiber adapter panels contain TIA/EIA-604 FOCIS compliant or compatible simplex or duplex fiber optic adapters and meet or exceed TIA/EIA-568-C.3 requirements. Fiber adapter panels include horizontal and vertical MPO adapters, LC, keyed LC, SC, ST, FC, MT-RJ or E-2000 fiber optic adapters. Fiber optic adapters include phosphor bronze or zirconia ceramic split sleeves to fit specific network requirements. LC and SC adapter housing colors follow the TIA/EIA-568-C.3 suggested color identification scheme. Multimedia modular panels allow customization of installation for applications requiring integration of fiber optic and copper cables. Blank fiber adapter panels reserve fiber adapter panel space for future use. All fiber adapter panels snap quickly into the front of fiber optic patch panels and enclosures for easy network deployment or moves, adds, and changes.



technical information

| | |
|--------------------------------|-------------------------------------------------------------------------------------------------------------------------------------------------------------------------------------------------------------------------------------------------------------------------------------------------------------------------------------------|
| Standards requirements: | All adapters meet or exceed TIA/EIA-568-C.3 requirements MPO: TIA/EIA-604 FOCIS-5 compliant LC: TIA/EIA-604 FOCIS-10 compatible SC: TIA/EIA-604 FOCIS-3 compliant ST: TIA/EIA-604 FOCIS-2 compatible FC: TIA/EIA-604 FOCIS-4 compliant MT-RJ: TIA/EIA-604 FOCIS-12 compliant E-2000: TIA/EIA-604 FOCIS-16 compatible |
|--------------------------------|-------------------------------------------------------------------------------------------------------------------------------------------------------------------------------------------------------------------------------------------------------------------------------------------------------------------------------------------|

| | |
|-------------------------------|---------------------------------------------------------------------------------------------------------------------------------------|
| Split sleeve material: | Zirconia ceramic: 10Gig™ OM3/OM4 multimode adapters OS1/OS2 singlemode adapters Phosphor bronze: OM1 and OM2 multimode adapters |
|-------------------------------|---------------------------------------------------------------------------------------------------------------------------------------|

Insertion loss: Supports the performance of connectors/patch cords

Return loss: Supports singlemode (SPC and UPC) and multimode (PC) connector polish performance

key features and benefits

Snap quickly into Opticom® Fiber Adapter Patch Panels and Enclosures Assures flexibility and ease of network deployment and moves, adds, and changes

Adapters available separately, and in Mini-Com® Patch Panels and Modules, and Opticom® MPO Fiber Optic Cassettes Provides a complete system solution for connectivity, such as horizontal and vertical MPO adapters, LC, Keyed LC, SC, ST, FC, MT-RJ, E-2000 and Mini-Com® Fiber Optic Adapter Modules, copper jack modules and audio/video modules

LC and SC adapter housing colors follow TIA/EIA-568-C.3 suggested identification color scheme Easy identification of fiber type via adapter colors; visually compatible with patch cords and connectivity that also follows the color identification scheme

Available with adapters in multiple colors Type A polarity incorporates a black MPO adapter housing with a key-up to key-down configuration. Type B polarity incorporates a charcoal gray MPO adapter housing with a key-up to key-up configuration.

applications

Opticom® Fiber Optic Adapter Panels (FAPs) are used with Opticom® Rack and Wall Mount Enclosures, Fiber Adapter Patch Panels, and Opticom® Zero RU Fiber Adapter Panel Brackets to deploy medium to high-density fiber optic network applications as specified in the data center cabling standard TIA 942 for cross connects in main distribution, horizontal distribution, and equipment distribution areas. Opticom® Fiber Adapter Panels snap quickly into the patch panels and enclosures for easy

network deployment or moves, adds, and changes. Opticom® Zero RU Fiber Adapter Panel Brackets mount directly to the rack to provide location, connection, and quick deployment of fiber adapter panels without taking any RU space. Multimedia modular panels also allow customization for installation requiring integration of fiber optic and copper cables. Blank fiber adapter panels reserve panel space for future use.

www.panduit.com

Opticom® Fiber Adapter Panels

Refer to next page for complete product listing.

Opticom® Rack Mount Fiber Cassette Enclosures

| | |
|----------------------------------|--------|
| 1 RU, holds 4 FAPs: | FCE1U |
| 1 RU, open access, holds 4 FAPs: | FCE1UA |
| 2 RU, holds 8 FAPs: | FCE2U |
| 4 RU, holds 12 FAPs: | FCE4U |

Opticom® Rack Mount Enclosures

| | |
|----------------------|--------|
| 1 RU, holds 3 FAPs: | FRME1U |
| 2 RU, holds 6 FAPs: | FRME2U |
| 3 RU, holds 9 FAPs: | FRME3 |
| 4 RU, holds 12 FAPs: | FRME4 |

Opticom® Standard Rack Mount Trays and Fiber Adapter Patch Panels

| | |
|------------------------------------------|--------------------|
| 1 RU, holds 4 FAPs with 1 RU std. panel: | FMT1 with CFAPPBL1 |
| 2 RU, holds 8 FAPs with 2 RU std. panel: | FMT2 with CFAPPBL2 |

Opticom® Angled Rack Mount Trays and Fiber Adapter Patch Panels

| | |
|--------------------------------------------|----------------------|
| 1 RU, holds 4 FAPs with 1 RU angled panel: | FMT1A with CFAPPBL1A |
| 2 RU, holds 8 FAPs with 2 RU angled panel: | FMT2A with CFAPPBL2A |

Opticom® Zero RU Fiber Adapter Panel Brackets

| | |
|-------------------------------------------|---------|
| Angled, 90°, adhesive and magnetic mount: | FEABRUA |
| Std., screw mount: | FEABRU |

Opticom® Fiber Adapter Panels (FAPs)

ordering information

| Opticom® MPO Fiber Optic Adapter Panels (FAPs) | | | | | |
|------------------------------------------------------------------|----------------|------------------|--------------------|--------------------|--------------------|
| Fiber Type | Adapter Color | FAP Orientation | 4 Adapters | 6 Adapters | 8 Adapters |
| OM3/OM4, OM2, OM1 and OS1/OS2 | Black | Horizontal | FAPH0412BLMPO | FAPH0612BLMPO | FAPH0812BLMPO |
| | | | 12 Adapters | 16 Adapters | 18 Adapters |
| | | FAP Orientation | FAPH1212BLMPO | FAPH1612BLMPO | FAPH1812BLMPO |
| | | | Vertical | FAPV0412BLMPO | FAPV0612BLMPO |
| LC Opticom® Fiber Adapter Panels (Duplex Adapters) | | | | | |
| Fiber Type | Adapter Color | Split Sleeve(s) | 6 Adapters | 8 Adapters | 12 Adapters |
| OM3/OM4 | Aqua | Zirconia Ceramic | FAP6WAQDLCZ | FAP8WAQDLCZ | FAP12WAQDLCZ |
| | | Phosphor Bronze | FAP6WAQDLC | FAP8WAQDLC | FAP12WAQDLC |
| OM2 | Black | Phosphor Bronze | FAP6WBLDLC | FAP8WBLDLC | FAP12WBLDLC |
| OM1 | Electric Ivory | Phosphor Bronze | FAP6WEIDL | FAP8WEIDL | FAP12WEIDL |
| OS1/OS2 | Blue | Zirconia Ceramic | FAP6WBUDLCZ | FAP8WBUDLCZ | FAP12WBUDLCZ |
| LC Opticom® Fiber Adapter Panels (Simplex Adapters) | | | | | |
| Fiber Type | Adapter Color | Split Sleeve(s) | 12 Adapters | | |
| OM3/OM4 | Aqua | Zirconia Ceramic | FAP12WAQLCZ | | |
| OS1/OS2 | Blue | Zirconia Ceramic | FAP12WBULCZ | | |
| LC Opticom® Fiber Adapter Panels, Angle Polish (Duplex Adapters) | | | | | |
| Fiber Type | Adapter Color | Split Sleeve(s) | 12 Adapters | | |
| OS1/OS2 | Green | Zirconia Ceramic | FAP12WAGDLCZ | | |
| Keyed LC Opticom® Fiber Adapter Panels (Duplex Adapters) | | | | | |
| Fiber Type | Key and Color | Split Sleeve(s) | 6 Adapters | 8 Adapters | 12 Adapters |
| All Fiber Types (OM3/OM4, OM2, OM1 and OS1/OS2) | A - Black | Zirconia Ceramic | FAP6WABLDLCZ | FAP8WABLDLCZ | FAP12WABLDLCZ |
| | B - Red | | FAP6WBRDDL | FAP8WBRDDL | FAP12WBRDDL |
| | C - Green | | FAP6WCGRDL | FAP8WCGRDL | FAP12WCGRDL |
| | D - Yellow | | FAP6WDYLDL | FAP8WDYLDL | FAP12WDYLDL |
| | E - Orange | | FAP6WEORDL | FAP8WEORDL | FAP12WEORDL |
| | F - Dark Blue | | FAP6WFDBDL | FAP8WFDBDL | FAP12WFDBDL |
| | G - Violet | | FAP6WGVLDL | FAP8WGVLDL | FAP12WGVLDL |
| | H - Aqua | | FAP6WHAQDL | FAP8WHAQDL | FAP12WHAQDL |
| | J - Rose | | FAP6WJRODL | FAP8WJRODL | FAP12WJRODL |
| | K - Slate | | FAP6WKIGDL | FAP8WKIGDL | FAP12WKIGDL |
| | L - Brown | | FAP6WLLBDL | FAP8WLLBDL | FAP12WLLBDL |
| | P - White | | FAP6WPWTDL | FAP8WPWTDL | FAP12WPWTDL |
| | Q - Charcoal | | FAP6WQCGDL | FAP8WQCGDL | FAP12WQCGDL |
| | R - Lavender | | FAP6WRLVDL | FAP8WRLVDL | FAP12WRLVDL |
| | S - Peach | | FAP6WSPEDL | FAP8WSPEDL | FAP12WSPEDL |
| | T - Steel Blue | | FAP6WTSBDL | FAP8WTSBDL | FAP12WTSBDL |
| | V - Maroon | | FAP6WVMADL | FAP8WVMADL | FAP12WVMADL |
| | W - Mint | | FAP6WWWIDL | FAP8WWWIDL | FAP12WWWIDL |

Opticom® Fiber Adapter Panels (FAPs)

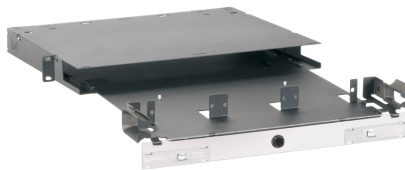
ordering information

| SC Opticom® Fiber Adapter Panels (Duplex Adapters) | | | | | | |
|-------------------------------------------------------|----------------|------------------|-------------|-------------|-------------|-------------|
| Fiber Type | Adapter Color | Split Sleeve(s) | 2 Adapters | 3 Adapters | 4 Adapters | 6 Adapters |
| OM3/OM4 | Aqua | Zirconia Ceramic | FAP2WAQDSCZ | FAP3WAQDSCZ | FAP4WAQDSCZ | FAP6WAQDSCZ |
| | | Phosphor Bronze | FAP2WAQDSC | FAP3WAQDSC | FAP4WAQDSC | FAP6WAQDSC |
| OM2 | Black | Phosphor Bronze | FAP2WBLDSC | FAP3WBLDSC | FAP4WBLDSC | FAP6WBLDSC |
| OM1 | Electric Ivory | Phosphor Bronze | FAP2WEIDSC | FAP3WEIDSC | FAP4WEIDSC | FAP6WEIDSC |
| OS1/OS2 | Blue | Zirconia Ceramic | FAP2WBUDSCZ | FAP3WBUDSCZ | FAP4WBUDSCZ | FAP6WBUDSCZ |
| APC, OS1/OS2 | APC Green | Zirconia Ceramic | FAP2WAGDSCZ | FAP3WAGDSCZ | FAP4WAGDSCZ | FAP6WAGDSCZ |
| SC Opticom® Fiber Adapter Panels (Simplex Adapters) | | | | | | |
| Fiber Type | Adapter Color | Split Sleeve(s) | 6 Adapters | 12 Adapters | | |
| OM3/OM4 | Aqua | Zirconia Ceramic | FAP6WAQSC | - | | |
| OM3/OM4 | Aqua | | FAP6WAQSCZ | - | | |
| OS1/OS2 | Blue | | FAP6WBUSCZ | FAP12WBUSCZ | | |
| APC, OS1/OS2 | APC Green | | FAP6WAGSCZ | FAP12WAGSCZ | | |
| ST Opticom® Fiber Adapter Panels (Simplex Adapters) | | | | | | |
| Fiber Type | Adapter Color | Split Sleeve(s) | 6 Adapters | 12 Adapters | | |
| OM3/OM4, OS1/OS2 | Plated | Zirconia Ceramic | FAP6WSTZ | FAP8WSTZ | | |
| OM1, OM2 | | Phosphor Bronze | FAP6WST | FAP8WST | | |
| FC Opticom® Fiber Adapter Panels (Simplex Adapters) | | | | | | |
| Fiber Type | Adapter Color | Split Sleeve(s) | 6 Adapters | | | |
| OM3/OM4, OS1/OS2 | Plated | Zirconia Ceramic | FAP6WFCZ | | | |
| OM1, OM2 | | Phosphor Bronze | FAP6WFC | | | |
| MT-RJ Opticom® Fiber Adapter Panels (Duplex Adapters) | | | | | | |
| Fiber Type | Adapter Color | Split Sleeve(s) | 6 Adapters | | | |
| OM3/OM4, OM2, OM1 | Electric Ivory | N/A | FMP6WMTRJ | | | |
| | Black | | FMP6WMTRJBL | | | |
| Multimedia Modular Panel | | | Blank Panel | | | |
| FMP6 | | | FAPB | | | |

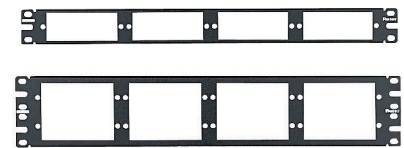
related products



Opticom® Rack Mount
Fiber Trays



Opticom® Rack Mount
Fiber Enclosures



Opticom® Fiber
Adapter Patch Panels

WORLDWIDE SUBSIDIARIES AND SALES OFFICES

PANDUIT CANADA
Markham, Ontario
cs-cdn@panduit.com
Phone: 800.777.3300

PANDUIT EUROPE LTD.
London, UK
cs-emea@panduit.com
Phone: 44.20.8601.7200

PANDUIT SINGAPORE PTE. LTD.
Republic of Singapore
cs-ap@panduit.com
Phone: 65.6305.7575

PANDUIT JAPAN
Tokyo, Japan
cs-japan@panduit.com
Phone: 81.3.6863.6000

PANDUIT LATIN AMERICA
Guadalajara, Mexico
cs-la@panduit.com
Phone: 52.33.3777.6000

PANDUIT AUSTRALIA PTY. LTD.
Victoria, Australia
cs-aus@panduit.com
Phone: 61.3.9794.9020

For a copy of Panduit product warranties, log on to www.panduit.com/warranty

For more information

Visit us at www.panduit.com

Contact Customer Service by email: cs@panduit.com
or by phone: 800.777.3300 and reference FBSP112

PANDUIT®

©2016 Panduit Corp.
ALL RIGHTS RESERVED.
FBSP112--WW-ENG

3/2016