



WEVER & DUCRÉ  
LIGHTING

# BOX WALL mini 1.0

300120B0

Project

Type

Notes

Quantity

Date

## GENERAL

Wall  
Surface  
Jet Black  
IP20  
Interior  
400<sup>a</sup> to 405<sup>b</sup> lm  
RAL 9005<sup>c</sup>

## LED

Lamp PAR16  
PAR16  
Socket GU10  
max. 12 W  
CRI ≥ 80

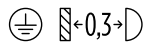
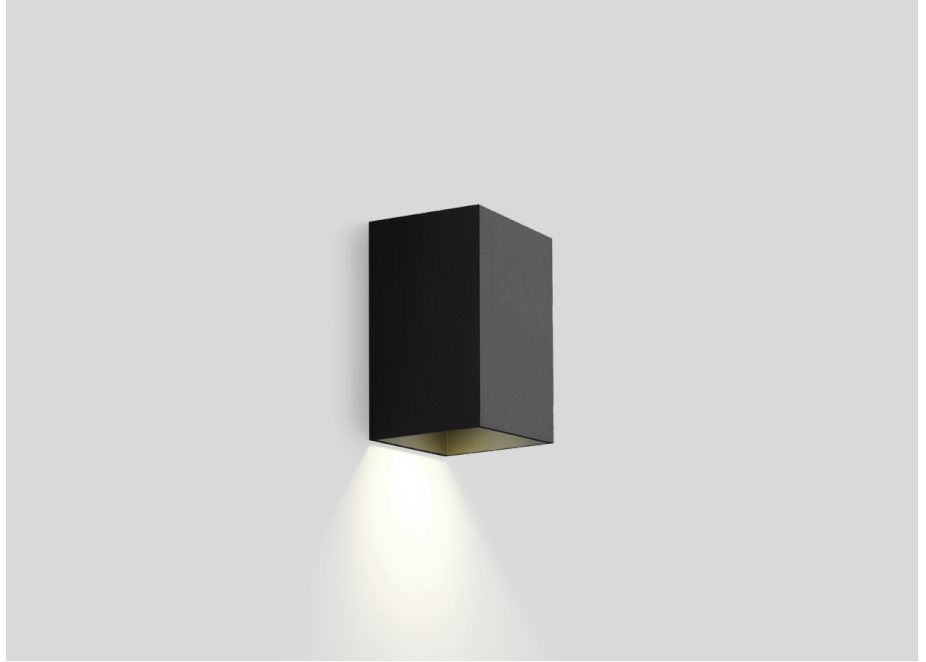
## PHYSICAL

Length 67 mm  
Width 67 mm  
Height 115 mm  
0.24 kg

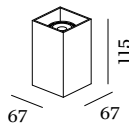
## ELECTRICAL

100 - 240 V  
Total connected power 6.6<sup>b</sup> to 6.7<sup>a</sup> W  
Class 1  
Safety distance 0.3 m

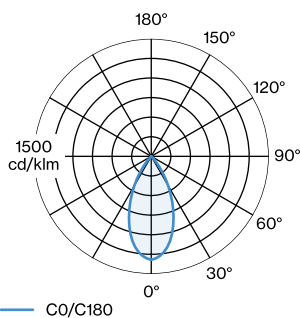
<sup>a</sup> LED 3000K CRI 80 white  
<sup>b</sup> LED 2700K CRI 80 white  
<sup>c</sup> Color may deviate slightly due to production conditions.



Squared wall surface mounted luminaire made from aluminium; surface Jet Black; powder coated; matt texture; RAL 9005; direct light distribution; lamp socket GU10; lamp type PAR16; max. 12W; 100 - 240 V; lamp not included; degree of protection IP20; PC1;



## LIGHT DISTRIBUTION





WEVER & DUCRÉ  
LIGHTING

# BOX WALL mini 1.0

300120B0

## LAMPS

### PAR16 LED Lamp

| TYPE                   | COLOUR | Ø·H (MM) | ORDERCODE       |
|------------------------|--------|----------|-----------------|
| 2700K   >90 CRI   GU10 | Black  | ∅50·58   | 9 0 1 2 2 8 B 3 |
| 3000K   >90 CRI   GU10 | Black  | ∅50·58   | 9 0 1 2 2 8 B 5 |
| 2700K   >90 CRI   GU10 | White  | ∅50·58   | 9 0 1 2 2 8 W 3 |
| 3000K   >90 CRI   GU10 | White  | ∅50·58   | 9 0 1 2 2 8 W 5 |
| 2700K   >80 CRI   GU10 | Silver | ∅50·52   | 9 0 5 2 2 7 S 2 |
| 3000K   >80 CRI   GU10 | Silver | ∅50·52   | 9 0 5 2 2 7 S 4 |