

Motion detector

# sensIQ S

EVO white

EAN 4007841 034955

**STEINEL**<sup>®</sup>  
PROFESSIONAL



infrared sensor 3 x  
100°



3 zones scalable  
2-20m

2000w

max. 2000 W



IP54



2 - 2000 lux  
daylight operation



5 sec - 15 min



ideal 2 - 5 m

TEACH

Teach mode



energy saving

5 JAHRE  
HERSTELLER  
GARANTIE

manufacturer's  
warranty  
[steinel-professional.de/garantie](http://steinel-professional.de/garantie)

## Function description

The evolution of perfection. The sensIQ S is just as perfect as its larger role model. For indoors and outdoors, ideal for building entrances, loading bays, for mounting heights of up to 5 m, quadruple sensor system for optimum surveillance over 3x100° coverage angle, 20 m reach (tangential), reach setting to the accuracy of a metre in 3 independent directions. Remote control and corner wall mount bracket included.

## Technical specifications

Type	Other
Type of accessory	Corner adapter
Dimensions (L x W x H)	114 x 74 x 128 mm
Mains power supply	100 – 240 V / 50 – 60 Hz
Power supply, detail	500 VA max., 120 V
Sensor Technology	passive infrared
Application, place	Indoors
Application, place, room	multi-storey / underground car park, outdoors, warehouse, front door, all round the building, courtyard & driveway, indoors
Installation site	wall, corner
Type of installation	Surface wiring
Switching zones	1360 switching zones
Electronic scalability	No
Mechanical scalability	Yes
Mounting height	2,00 – 5,00 m
Optimum mounting height	2 m
Detection angle	300 °
Angle of aperture	90 °
Sneak-by guard	Yes
Capability of masking out individual segments	Yes

Reach, detail	Reach adjustable from 2 - 20 m in 3 directions (100° in each)
Reach, radial	r = 4 m (42 m²)
Twilight setting TEACH	Yes
Twilight setting	2 – 2000 lx
Time setting	5 s – 15 Min.
Switching output 1, resistive	2000 W
Constant-lighting control	No
Basic light level function	No
With remote control	Yes
Interconnection	Yes
IP rating	IP54
Material	Plastic
Ambient temperature	-20 – 50 °C
Colour	white
Colour, RAL	9010
IDs, certificates	VDE
Manufacturer's Warranty	5 years
Version	white
PU1, EAN	4007841034955

<https://www.steinel.de>

Motion detector

# sensIQ S

EVO white

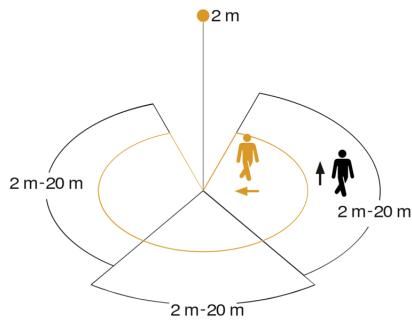
EAN 4007841 034955

**STEINEL**<sup>®</sup>  
PROFESSIONAL

## Accessories

EAN 4007841 007638	Remote control RC9
EAN 4007841 608804	Corner wall mount sensIQ S
EAN 4007841 608835	Corner wall mount sensIQ S
EAN 4007841 009151	Remote control Smart Remote
EAN 4007841 608828	Corner wall mount sensIQ S

## Detection Zone



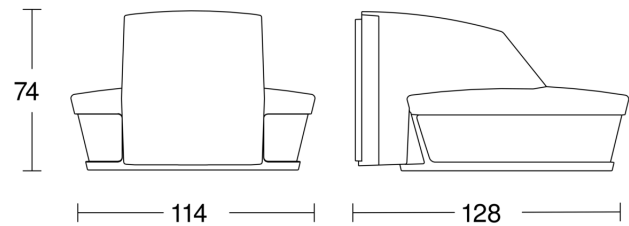
Mögliche Montagehöhe: 2,00 m – 5,00 m

Orange: radial

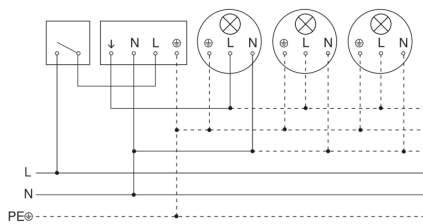
Schwarz: tangential

3 skallerbare Zonen

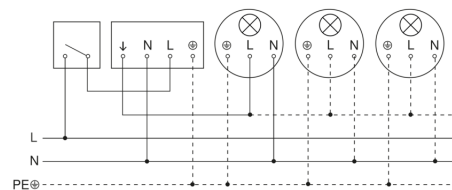
## Dimension Drawing



## Light without neutral conductor



## Light with neutral conductor



Motion detector

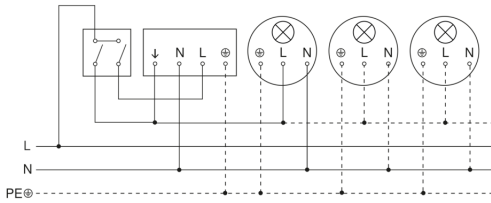
# sensIQ S

EVO white

EAN 4007841 034955



## Connection using two-circuit switch for manual and automatic operation



## Connection via a two-way switch for manual override and automatic operation

