



THE ORIGINAL

www.YouTube.com/toxgermany

Properties

- The original all-purpose fixing – often copied but never matched
- Holds secure in almost all building materials
- Secure knotting in cavities
- Provides reliable expansion in solid brick
- No spinning in the drill hole
- Pre-positioned and through installation

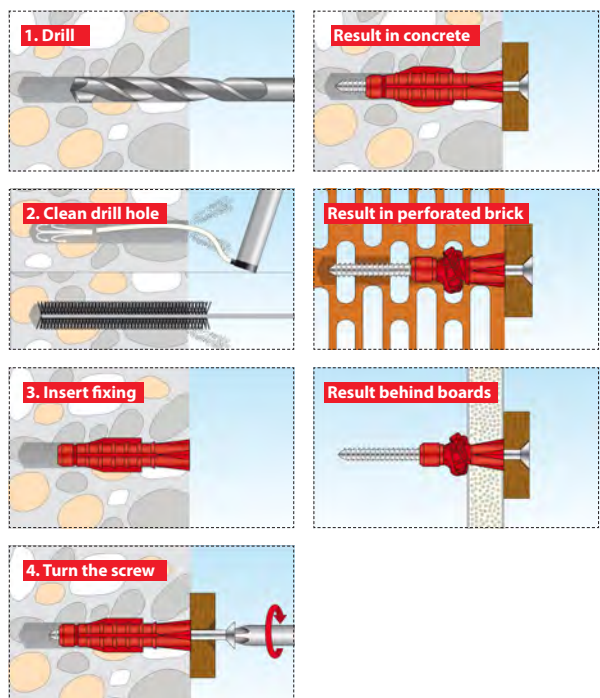
Description & application

- 3-part expanding anchor with no fixing cap
- Anti-rotation feature on the fixing neck and rotary wing on the fixing body prevent spinning in the construction material
- Tri + screw: Countersunk screw with PZ drive for improved transfer of force when screwing in



Handling & installation

- Make a drill hole the size of the fixing diameter
- Drill into perforated brick and gypsum plasterboard without impact to prevent webs in the perforated brick from breaking away
- Drill into gypsum plasterboard using a wood or metal drill
- Use impact to drill into concrete and solid brick
- Min. screw length = fixing length + thickness of the object to be mounted + 1x screw \varnothing
- Select the largest possible screw \varnothing for through installation
- Pre-positioned and through installation possible

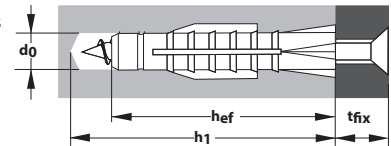


Building materials & load bearing values



Tri	Concrete C 20/25	Solid brick MZ 12	Perforated brick ≥ Hlz12, bulk density kg/cm³	Cavity brick ≥ Hbl2	Porous concrete ≥ PB2, PP2	Gypsum plaster- board 12.5 mm	Gypsum fibre board 12.5 mm
5/31	25 kg	15 kg	15 kg	10 kg	-	6 kg	15 kg
6/36	50 kg	35 kg	25 kg	15 kg	-	10 kg	20 kg
6/51	60 kg	40 kg	25 kg	20 kg	10 kg	10 kg	25 kg
7/36	60 kg	40 kg	25 kg	25 kg	10 kg	10 kg	20 kg
7/51	60 kg	50 kg	25 kg	25 kg	10 kg	10 kg	20 kg
8/51	100 kg	80 kg	30 kg	25 kg	15 kg	10 kg	30 kg
10/61	130 kg	80 kg	35 kg	28 kg	20 kg	-	30 kg
12/71	160 kg	120 kg	40 kg	30 kg	25 kg	-	-
14/75	200 kg	140 kg	40 kg	35 kg	25 kg	-	-

- The load bearing values indicated relate to chipboard screws with the largest screw diameter; thread shape similar to DIN 7998
- The anchorage depth of the fixing must be observed
- The drilling process and drill hole cleaning must be appropriate to the building material
- The recommended loads apply only to installation in the building material and not for installation in gaps
- Approved fixings must be used for mountings where safety is a factor (see also fixing 1x1)
- Where items have a screw included, any variant values on the packaging must be observed



Packaging	Art. no.	Type	Fixing contents	Screw contents	Fixing Ø	Fixing length	Screw size	Drill Ø	Min. drill hole depth	Min. insertion depth	Size of object to be mounted	Approval
								d0 Ø mm	h1 ≥ mm	hef mm	tfix ≤ mm	ETA / DIBt / approval
	Tri		per pack	per pack	mm	mm	Ø mm	d0 Ø mm	h1 ≥ mm	hef mm	tfix ≤ mm	ETA / DIBt / approval
	010 100 021	5/31*	100x	-	5	31	3.0 - 4.0	5	45	31	-	-
	010 100 041	6/36*	50x	-	6	36	4.0 - 5.0	6	50	36	-	-
	010 100 051	6/36*	100x	-	6	36	4.0 - 5.0	6	50	36	-	-
	010 100 061	6/51	100x	-	6	51	4.0 - 5.0	6	65	51	-	-
	010 100 071	6/51	40x	-	6	51	4.0 - 5.0	6	65	51	-	-
	010 100 081	7/36*	100x	-	7	36	4.5 - 5.0	7	50	36	-	-
	010 100 091	7/51	100x	-	7	51	4.5 - 5.0	7	70	51	-	-
	010 100 101	8/51	50x	-	8	51	5.0 - 6.0	8	70	51	-	-
	010 100 111	8/51	100x	-	8	51	5.0 - 6.0	8	70	51	-	-
	010 100 151	10/61	20x	-	10	61	6.0 - 8.0	10	85	61	-	-
	010 100 161	10/61	50x	-	10	61	6.0 - 8.0	10	85	61	-	-
	010 100 181	12/71	25x	-	12	71	8.0 - 10.0	12	95	71	-	-
	010 100 191	12/71	15x	-	12	71	8.0 - 10.0	12	95	71	-	-
	010 100 201	14/75	20x	-	14	75	10.0 - 12.0	14	100	75	-	-
	010 100 211	14/75	10x	-	14	75	10.0 - 12.0	14	100	75	-	-
	Tri + screw		per pack	per pack	mm	mm	mm	d0 Ø mm	h1 ≥ mm	hef mm	tfix ≤ mm	ETA / DIBt / approval
	010 101 231	6/36 S*	50x	50x	6	36	4.5 x 50	6	50	36	10	-
	010 101 241	6/51 S	50x	50x	6	51	4.5 x 70	6	65	51	15	-
	010 101 271	8/51 S	25x	25x	8	51	6.0 x 70	8	70	51	14	-
	010 101 281	10/61 S	20x	20x	10	61	8.0 x 80	10	85	61	12	-
	Tri		per pack	per pack	mm	mm	Ø mm	d0 Ø mm	h1 ≥ mm	hef mm	tfix ≤ mm	ETA / DIBt / approval
	010 700 021	5/31*	24x	-	5	31	3.0 - 4.0	5	45	31	-	-
	010 700 051	6/36*	20x	-	6	36	4.0 - 5.0	6	50	36	-	-
	010 700 061	6/51	16x	-	6	51	4.0 - 5.0	6	65	51	-	-
	010 700 111	8/51	10x	-	8	51	5.0 - 6.0	8	70	51	-	-
	010 700 161	10/61	6x	-	10	61	6.0 - 8.0	10	85	61	-	-
	010 700 181	12/71	4x	-	12	71	8.0 - 10.0	12	95	71	-	-
	010 700 201	14/75	2x	-	14	75	10.0 - 12.0	14	100	75	-	-
	Tri + screw		per pack	per pack	mm	mm	mm	d0 Ø mm	h1 ≥ mm	hef mm	tfix ≤ mm	ETA / DIBt / approval
	010 701 021	5/31 S*	12x	12x	5	31	3.5 x 45	5	45	31	10	-
	010 701 051	6/36 S*	10x	10x	6	36	4.5 x 50	6	50	36	10	-
	010 701 061	6/51 S	8x	8x	6	51	4.5 x 70	6	65	51	15	-
	010 701 111	8/51 S	6x	6x	8	51	6.0 x 70	8	70	51	14	-
	010 701 161	10/61 S	4x	4x	10	61	8.0 x 80**	10	85	61	12	-
	010 701 181	12/71 S	2x	2x	12	71	10.0 x 90***	12	95	71	10	-

* suitable only for single sheet gypsum plasterboard

** Hexagonal wood screw SW 13

*** Hexagonal wood screw SW 17