

CHAIN BRACKET

P/N: 7685, 7706, 7664, 7707



CHAIN BRACKET

is a fastening system for installation of telecom equipment or other type of equipment on monopoles or round poles.

FLEXIBILITY

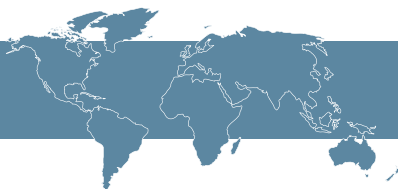
The Chain Bracket can be installed on any pole from $\varnothing 110$ mm up to $\varnothing 1070$ mm. A wide range of accessory mounts are available for mounting tubes, RRU:s, filters etc. even for compensation of inclination when installing on conical monopoles.

QUALITY

All components are made of anodized aluminum and acid proof stainless steel which gives the support excellent corrosion resistance.

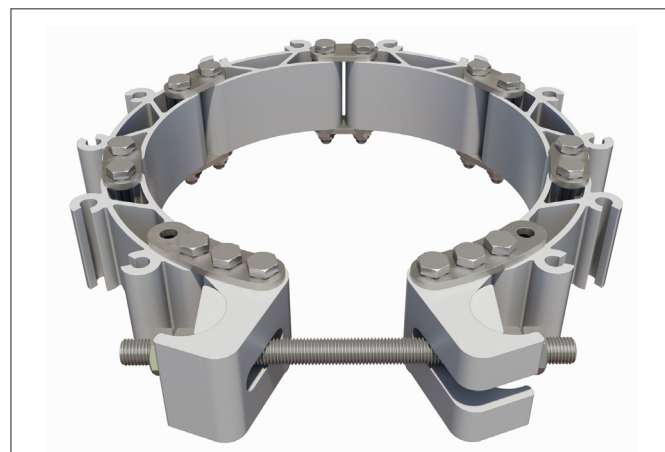
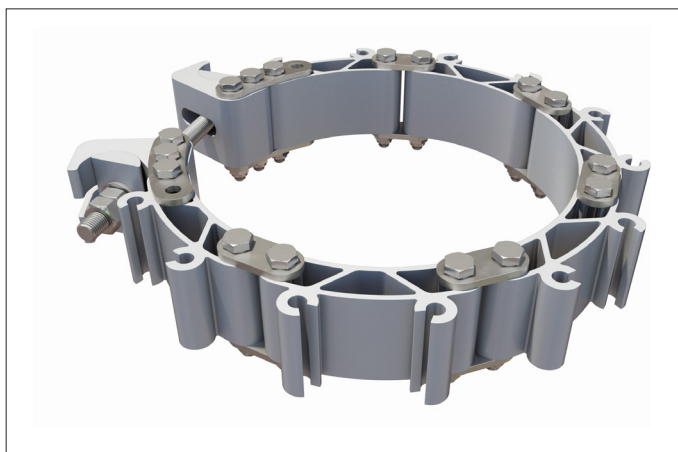
EASY ASSEMBLY

Handling and installation is very easy because of its light weight but also thanks to the pre-assembled kit system and the facile tightening process.



Quality Design

BASIC SETS PRE-ASSEMBLY AT DELIVERY SPEEDS UP INSTALLATION ON SITE

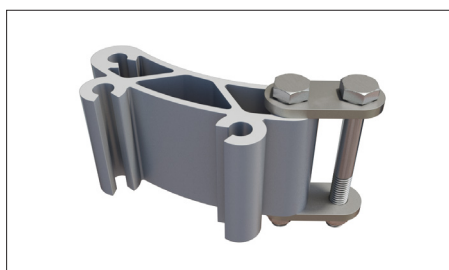


Chain bracket is a fastening system for installation of telecom equipment or other type of equipment on monopoles or round poles.

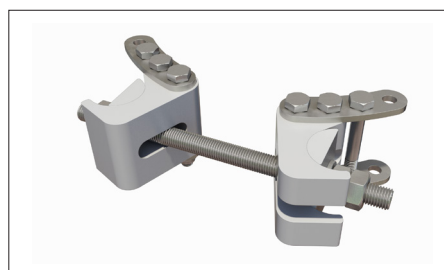
Chain bracket opens easily on one side to be secured by tighten the M12 screw to tightening torque of 57Nm.

THE MAIN COMPONENTS FOR THE CHAIN BRACKET

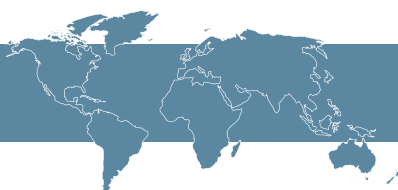
LINK



TENSIONER

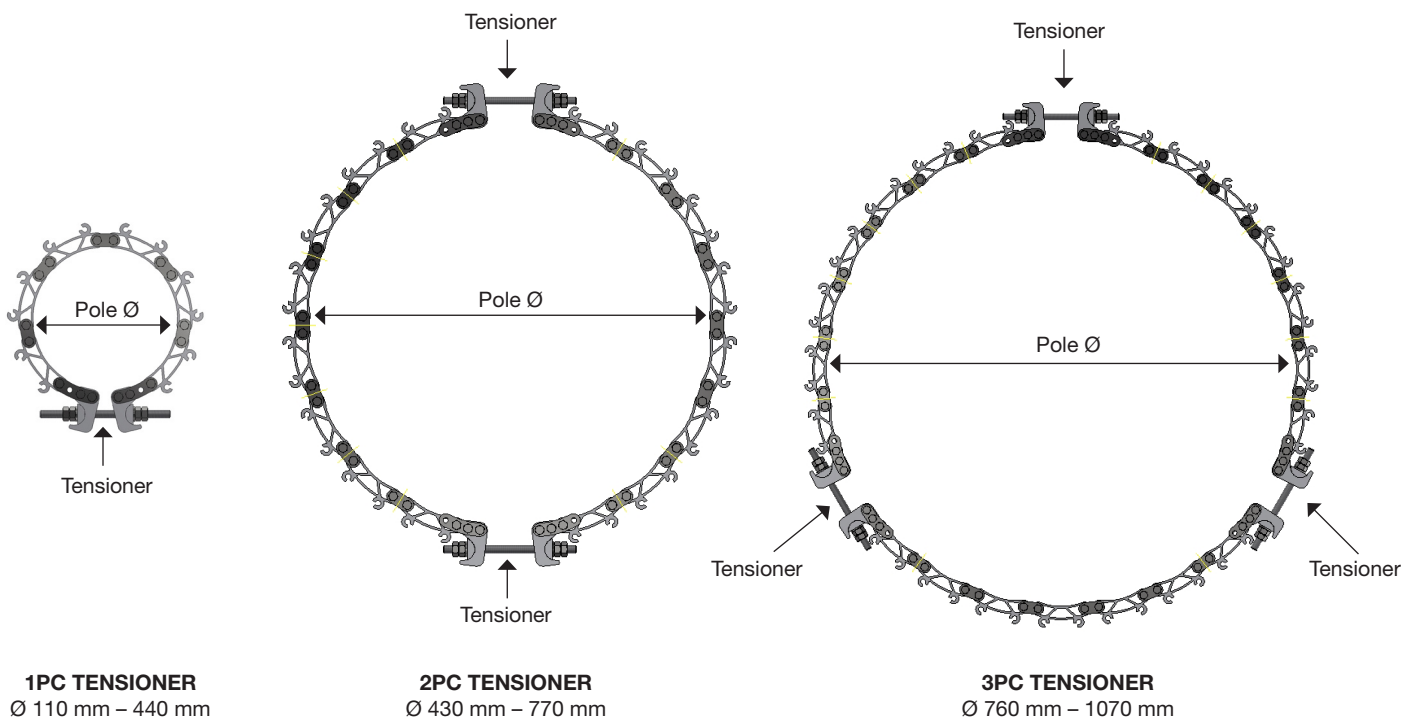


Chain bracket system consists of two main components, Link and Tensioner. Both are made in extruded aluminum alloy EN AW 6005-T6 which is natural anodized 20µm. The link plates and all fasteners are made of acid proof stainless steel.



Quality Design

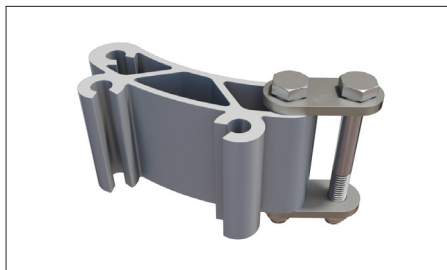
NUMBER OF TENSIONERS NEEDED ON DIFFERENT POLE SIZES



BASIC SETS PRE-ASSEMBLY AT DELIVERY SPEEDS UP INSTALLATION ON SITE

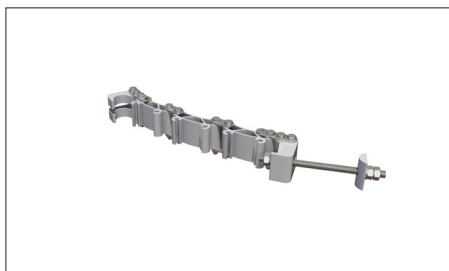
LINK SET # ART.NO: 7685

(1 link)



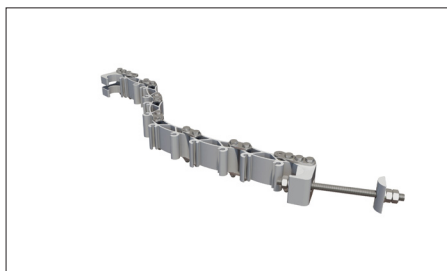
BASIC SET # 1 ART.NO: 7706

(3 links + 1 tensioner)



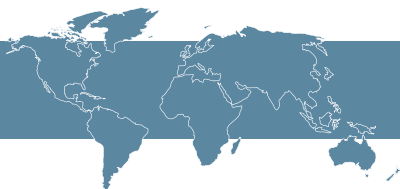
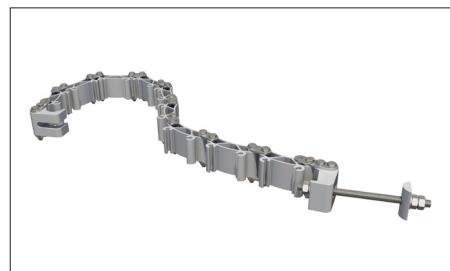
BASIC SET # 2 ART.NO: 7664

(6 links + 1 tensioner)



BASIC SET # 3 ART.NO: 7707

(9 links + 1 tensioner)



Quality Design

TECHNICAL INFORMATION CHAIN BRACKET

ORDERING P/N	FUNCTION DESCRIPTION
7685, 7706, 7664, 7707	The chain bracket is an innovative mounting solution for large poles, chimneys etc. with a diameter over Ø110 mm. It comes with a full range of accessories such as brackets for RRU's, antennas, filters etc.

POLE DIAMETER RANGE			Configuration of the 3 basic set + Link at different Pole sizes					
POLE Ø	mm	(in)	LINKS	TENSIONER	BASIC SET #1	BASIC SET #2	BASIC SET #3	SINGLE LINK
Min	Max		Qty	Qty	Art.No: 7706	Art.No: 7664	Art.No: 7707	Art.No: 7685
110	134	(4,3-5,3)	3	1	1	-	-	-
134	169	(5,3-6,6)	4	1	1	-	-	1
169	205	(6,6-8,1)	5	1	1	-	-	2
205	239	(8,1-9,4)	6	1	-	1	-	-
239	273	(9,4-10,7)	7	1	-	1	-	1
273	306	(10,7-12)	8	1	-	1	-	2
306	340	(12-13,4)	9	1	-	-	1	-
340	375	(13,4-14,8)	10	1	-	-	1	1
375	408	(14,8-16)	11	1	-	-	1	2
408	440	(16-17,3)	12	1	-	-	1	3
430	505	(17,3-20)	12	2	-	2	-	-
500	570	(19,7-22,4)	14	2	-	2	-	2
565	640	(22,2-25,2)	16	2	-	1	1	1
635	705	(25-27,8)	18	2	-	-	2	-
700	770	(27,5-30,3)	20	2	-	-	2	2
760	870	(30-34,3)	21	3	1	-	2	-
860	970	(34-38,2)	24	3	-	1	2	-
960	1070	(37,8-42)	27	3	-	-	3	-

MECHANICAL DATA	
Link and tensioner profiles:	Aluminum, nature anodized 20µm
Link plates and fasteners:	Acid proof stainless steel

PERFORMANCE FOR TWO LEVELS	OPERATIONAL WIND SPEED			MAX SIDE WIND AREA ***		MAX LOAD WEIGHT **	
	km/h	m/s	mph	m ²	ft ²	kg	lb
	240	67	150	0,4	4,3	330	730
	210	58	130	0,5	5,5	330	730
	180	50	112	0,7	7,5	330	730
	150	42	93	1,0	11	330	730
	120	33	75	1,5	16	330	730

*) Max side wind area for each mounted equipment

**) Nominal values, performance also depends on shape and size

PACKAGE DIMENSIONS		LENGTH	WIDTH	HEIGHT	WEIGHT
Art.No	Description	mm (in)	mm (in)	mm (in)	kg (lb)
7685	Link Set (1 link)	110 (4,3)	60 (2,4)	85 (3,3)	0,35 (0,8)
7706	Basic Set #1 (3 links)	250 (10)	110 (4,3)	85 (3,3)	2,0 (4,4)
7664	Basic Set #2 (6 links)	385 (15)	140 (5,5)	90 (3,6)	3,0 (6,6)
7707	Basic Set #3 (9 links)	525 (21)	130 (5,1)	85 (3,3)	4,0 (8,8)

ACCESSORIES		MOUNTING TUBES		
Art.No	Description	P/N:	Tube: mm (in)	Length: m (in)
7676	Chain Bracket RRU Holder			
7682	Chain Bracket Tube Holder (for 35-65 mm mounting tube)	2002	Ø60 x 3 (2,4 x 0,12)	1,0 (40)
7684	Chain Bracket Tube Holder Ext. (for 35-65 mm mounting tube)	1949	Ø60 x 3 (2,4 x 0,12)	1,5 (60)
7822	Chain Bracket Single Tube Holder (for 45-60 mm mounting tube)	1948	Ø60 x 3 (2,4 x 0,12)	2,0 (80)
8204	EPDM rubber strip, running metre, WxT=52x1.5 mm (2.0x0.06 in)	1967	Ø60 x 3 (2,4 x 0,12)	2,5 (100)
		2003	Ø60 x 3 (2,4 x 0,12)	3,0 (120)

Other accessories available upon request.

The verification is carried out in accordance with relevant parts of:

- EN 755-9:2008 Aluminium and aluminium alloys-Extruded rod/bars, tube and profiles
- EN 1999-1-1:2007 Eurocode 9: Design of aluminium structures – Part 1-1: General structural rules
- EN 1999-1-3:2007 Eurocode9: Design of aluminium structures – Part 1-3: Structures susceptible to fatigue
- EN 1991-1-4:2005 Eurocode1: Actions on structures – Part 1-4: General actions – Wind action

Compliance to ROHS 2 directives 2011/65/EU

