

BEGA**77 265**

Garden and pathway luminaire



Project · Reference number

Date

Product data sheet

Application

LED garden and path luminaire with directed light for effective illumination in private gardens.

Product description

Luminaire made of aluminium alloy, aluminium and stainless steel
 Clear safety glass
 Silicone gasket
 Luminaire with anchorage unit for fixing in the soil
 The anchorage unit is made of galvanised steel according to EN ISO 1461
 Line connector for mains supply cable up to \varnothing 13 mm · max. 3 × 2,5[□]
 LED power supply unit
 220-240 V \sphericalangle 0/50-60 Hz
 DC 176-264 V
 Safety class I
 Protection class IP 65
 Dust-tight and protection against water jets
 Impact strength IK06
 Protection against mechanical impacts < 1 joule
 – Safety mark
CE – Conformity mark
 Weight: 2.8 kg

Inrush current

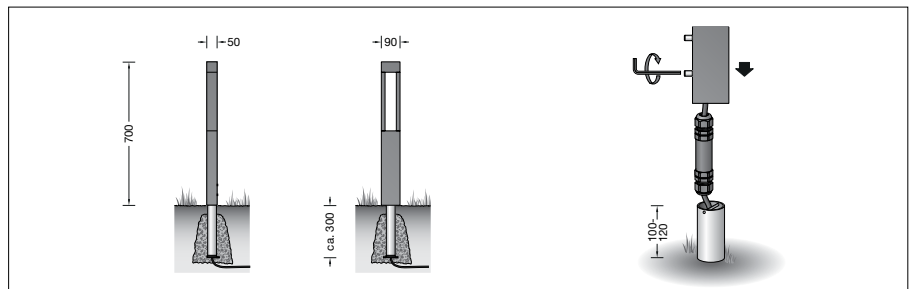
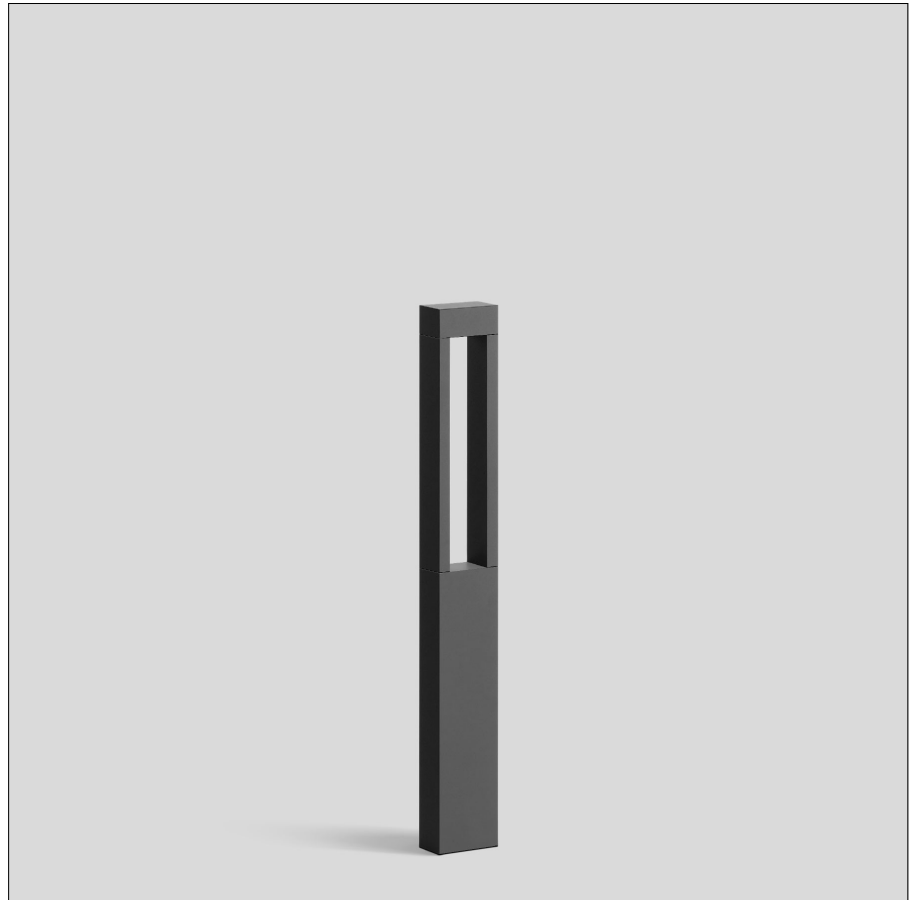
Inrush current: 7 A / 112 μ s
 Maximum number of luminaires of this type per miniature circuit breaker:
 B10A: 38 luminaires
 B16A: 61 luminaires
 C10A: 64 luminaires
 C16A: 102 luminaires

Lamp

Module connected wattage	4.2 W
Luminaire connected wattage	5.3 W
Rated temperature	$t_a = 25\text{ }^\circ\text{C}$
Ambient temperature	$t_{a\text{ max}} = 50\text{ }^\circ\text{C}$

77 265 K3

Module designation	2x LED-0234/830
Colour temperature	3000 K
Colour rendering index	CRI > 80
Module luminous flux	560 lm
Luminaire luminous flux	171 lm
Luminaire luminous efficiency	32,3 lm/W



Service life · Ambient temperature

Rated temperature $t_a = 25\text{ }^\circ\text{C}$	
LED psu:	> 50,000 h
LED module:	> 200,000 h (L80 B50) 100,000 h (L90 B50)

Ambient temperature $t_{a\text{ max}} = 50\text{ }^\circ\text{C}$ (100 %)	
LED psu:	50,000 h
LED module:	61,000 h (L80 B50) 91,000 h (L70 B50)

Light technique

Luminaire data for the light planning program DIALux for outdoor lighting, street lighting and indoor lighting as well as luminaire data in EULUMDAT- and IES-format you will find on the BEGA web page www.bega.com.
 Recommended light point interval 4 m.

Article No. 77 265

Colour graphite or silver
 graphite – article number
 silver – article number + **A**

Accessories

Distribution box for installation in soil
70 730 Distribution box with 7 cable entries
 Connection terminals 5 × 4[□]
71 053 Distribution box with 10 cable entries
 Connection terminals 6 × 16[□]

See the separate instructions for use.

Light distribution

