



WEVER & DUCRÉ
LIGHTING

BOX WALL OUTDOOR 1.0

748168B5

Project

Type

Notes

Quantity

Date

GENERAL

Wall
Surface
Jet Black
IP65
Exterior
370 lm
RAL 9005^a

LED

3000 K
3-step binning

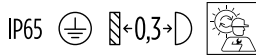
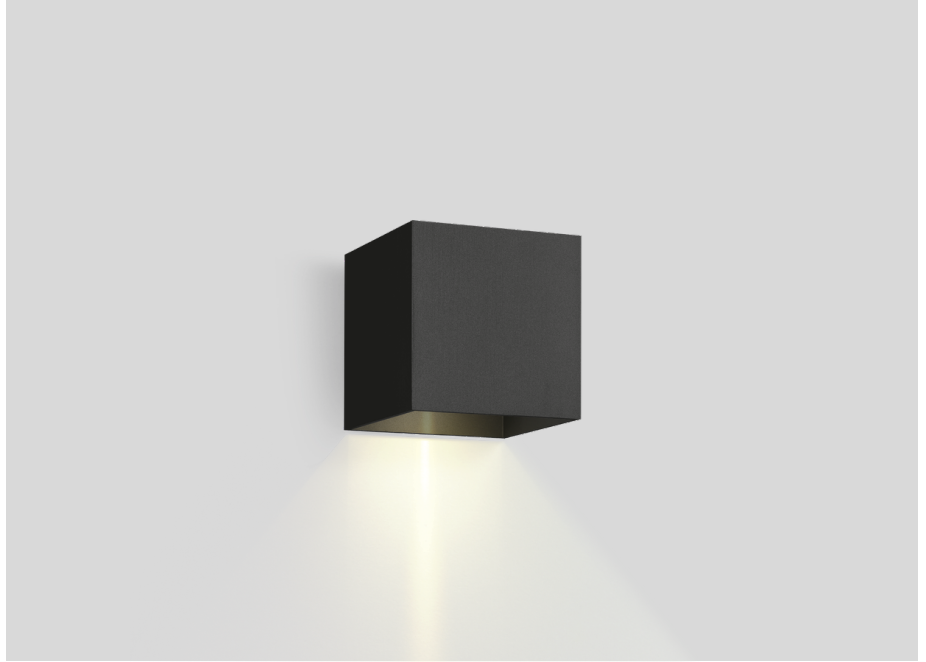
PHYSICAL

Length 100 mm
Width 100 mm
Height 100 mm
0.6 kg

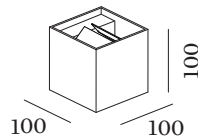
ELECTRICAL

phase-cut dim
220 - 240 V
Total connected power 6 W
Class 1
Safety distance 0.3 m

^a Color may deviate slightly due to production conditions.



Squared wall surface mounted luminaire made from aluminium; surface Jet Black; powder coated; matt texture; RAL 9005; direct light distribution; PCB 3-step binning; phase-cut dim; light colour 3000 K; binning initial MacAdam 3 SDCM; CRI 90; 220 - 240 V; degree of protection IP65; PC1; inclusive flaps for adjustable beam angle; light source replaceable by an authorized professional;





WEVER & DUCRÉ
LIGHTING

BOX WALL OUTDOOR 1.0

748168B5

Maintenance Factors

Operating Time [h]	10 000	20 000	30 000	40 000	50 000
LLMF	0.98	0.95	0.92	0.89	0.86
LSF	1	1	1	1	1

MF	$LMF \times RSMF \times LLMF \times LSF$	RSMF ^a	Room Surface Maintenance Factor
MF	Maintenance Factor	LLMF	Lamp Lumens Maintenance Factor
LMF ^a	Luminaire Maintenance Factor	LSF	Lamp Survival Faktor

^a According to "CIE 97, Maintenance of indoor electric lighting systems", 2005, ISBN 3-900-734-34-8. The values must be determined by the planner.